



BX-KWIK DATA SHEET

Electrical hanger system



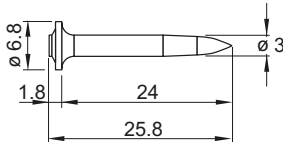
BX-Kwik Electrical hanger system

Product data

X-EHS MX



X-P 24 B3 MX



Features and benefits

A special hanger system with pre-drilled pilot hole optimized for higher load and close to **100% stick rate** for applications on **soft & tough** concrete.

General information

The system consists of:

- X-EHS MX hanger
- TX-C-5/10B drill bit
- X-P 24 B3 MX nail
- BX 3 ME

Material Specifications

Hanger:

Zinc coating ≥ 10 mm

Nail:

Carbon Steel 57.5 HRC

Zinc Coating 2 – 10 μ m

Applications

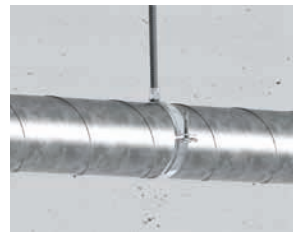
Examples



Threaded rod attachments to concrete



Cable trays

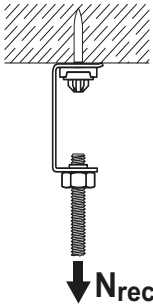


Small pipes

These zinc coated fasteners are not suitable for long-term service outdoors or in otherwise corrosive environments. For further detailed information on corrosion see chapter **Direct Fastening Principles and Technique**.

These fasteners are not recommended for fastening of suspended ceilings.

Performance data on concrete



Recommended Tension Load N_{rec} [kN]	
Concrete Toughness ¹⁾	
Soft	Tough
0.3	0.45

Stick rate estimation ¹⁾	
Soft Concrete	Tough Concrete
95-100 %	95-100 %

Conditions:

- A sufficient redundancy has to be ensured, that a failure of a single fastening will not lead to collapse of the entire system.
- Soft concrete up to $f_{c,cube} = 45 \text{ N/mm}^2$ (C35/45).
- Tough concrete up to $f_{c,cube} = 60 \text{ N/mm}^2$ (C50/60).
- Concrete with aggregate like granite or river rock or softer, and up to 16 mm diameter.
- Loads valid for cracked and uncracked concrete.

¹⁾ The stick rate indicates the percentage of nails that were driven correctly to carry a load. Stick rate can vary from the above value depending on job site conditions.

For more details regarding fastener behaviour and concrete types, please refer to

Concrete Fastener Selection section.

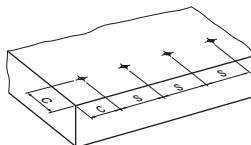
Application requirements

Thickness of base material

Concrete:

$h_{min} = 60 \text{ mm}$

Edge distance and fastener spacing

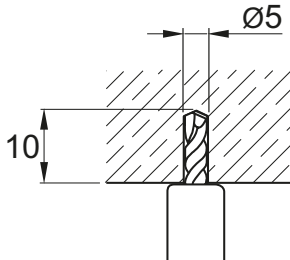


Edge distance: $c \geq 70 \text{ mm}$

Spacing: $s \geq 100 \text{ mm}$

Installation

Pre-drilling details



Pre-drilling with Hilti drill bit **TX-C-5/10B** until a ring on the concrete surface is visible.

Fastener selection and system recommendation

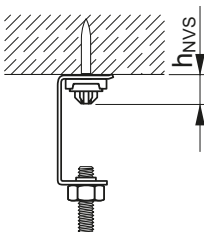
Fastener program

Hanger	Item no.
X-EHS M4 MX	273367
X-EHS M6 MX	272073
X-EHS M8 MX	273368

Nail	Item no.
X-P 24 B3 MX	2105405

Drill-bit	Item no.
TX-C-5/10B	2178329

Fastening quality assurance



$h_{NVS} = 4.0 - 7.0 \text{ mm}$