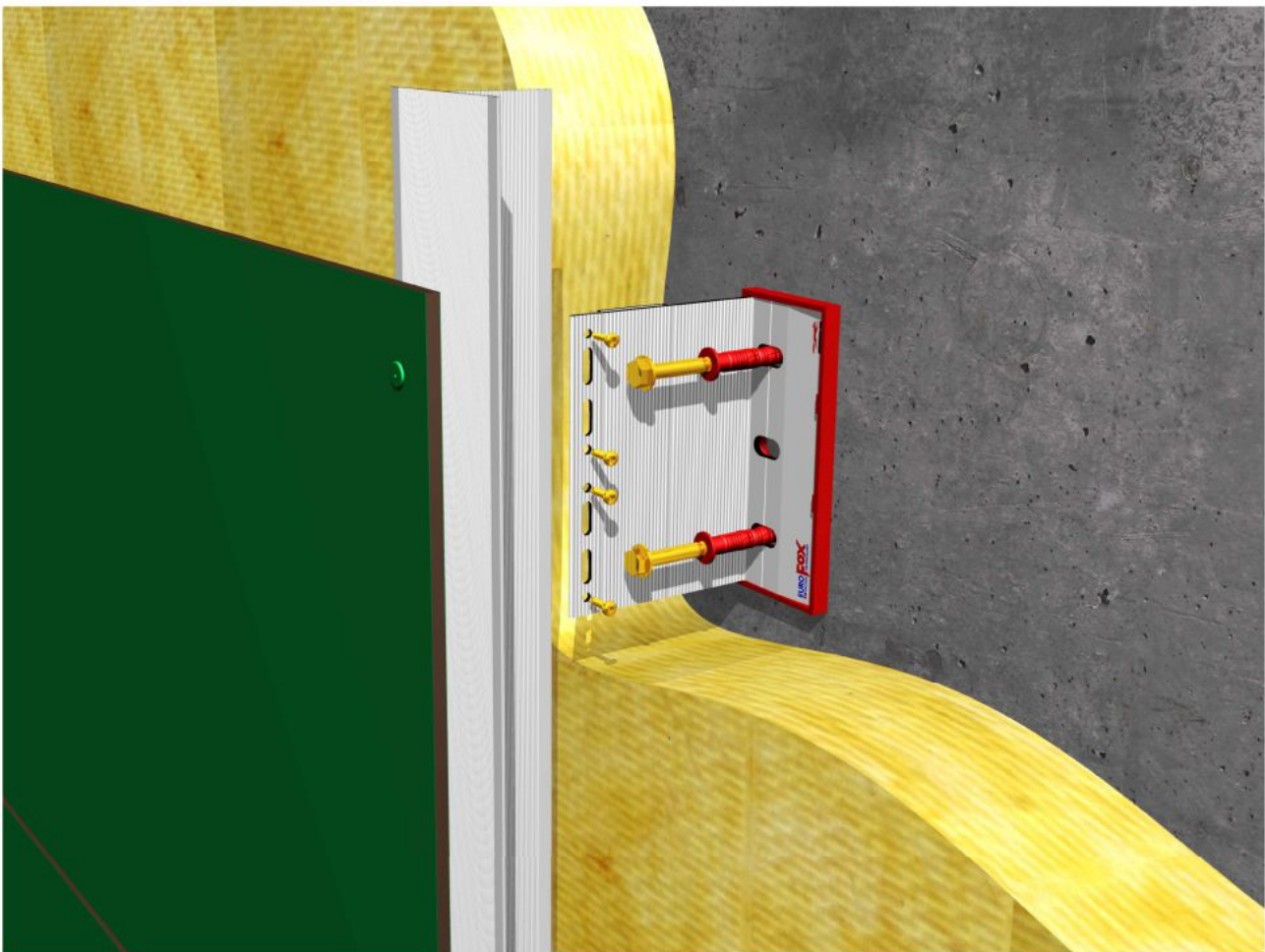
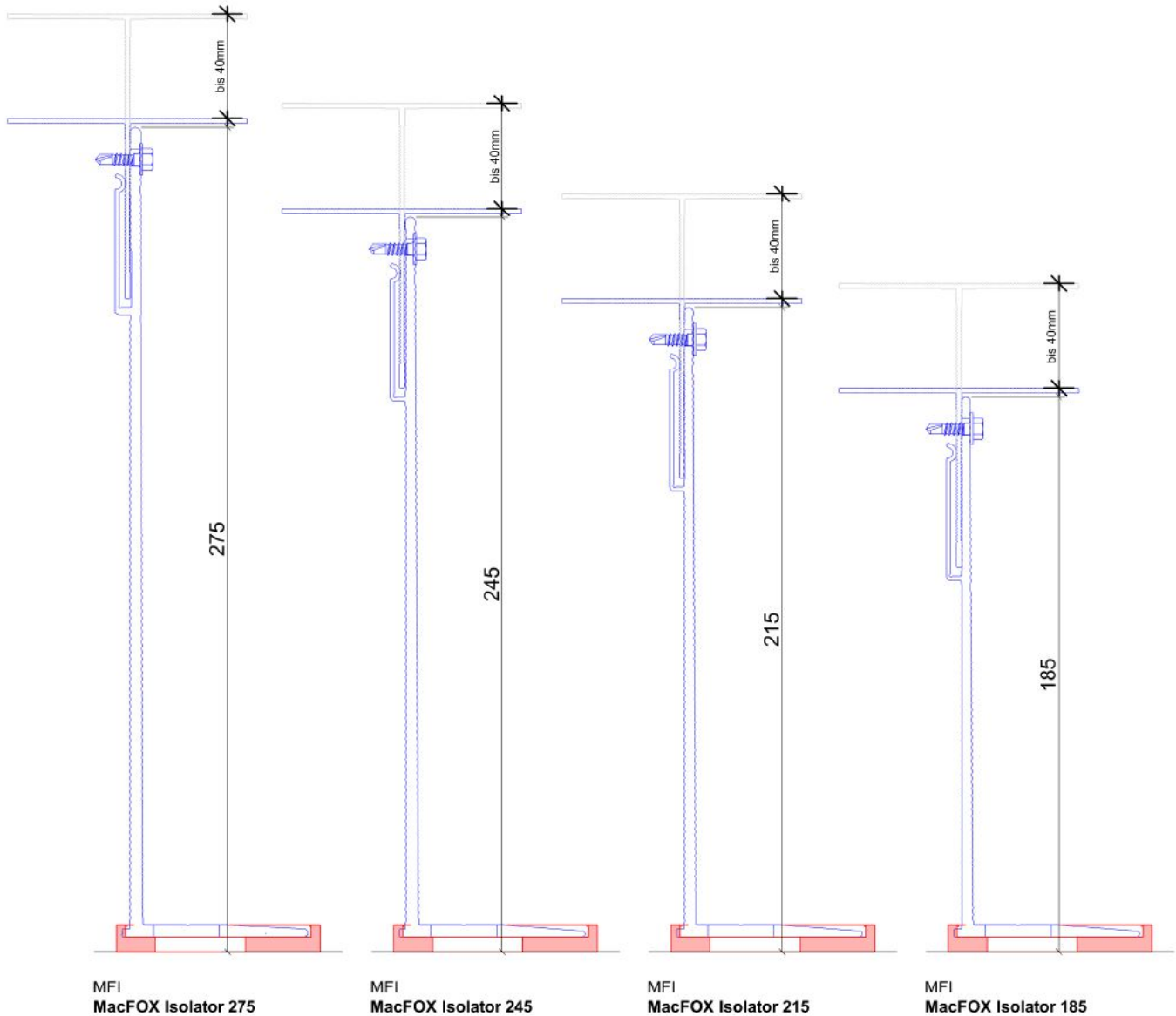


# MTA - V - 100

ALU - Unterkonstruktion für  
hinterlüftete Fassadenbekleidung  
System zur sichtbaren Befestigung mittels Nieten/ Schrauben

aluminium support system for rainscreen cladding  
system for the visible attachment  
fixed by rivet/ screw



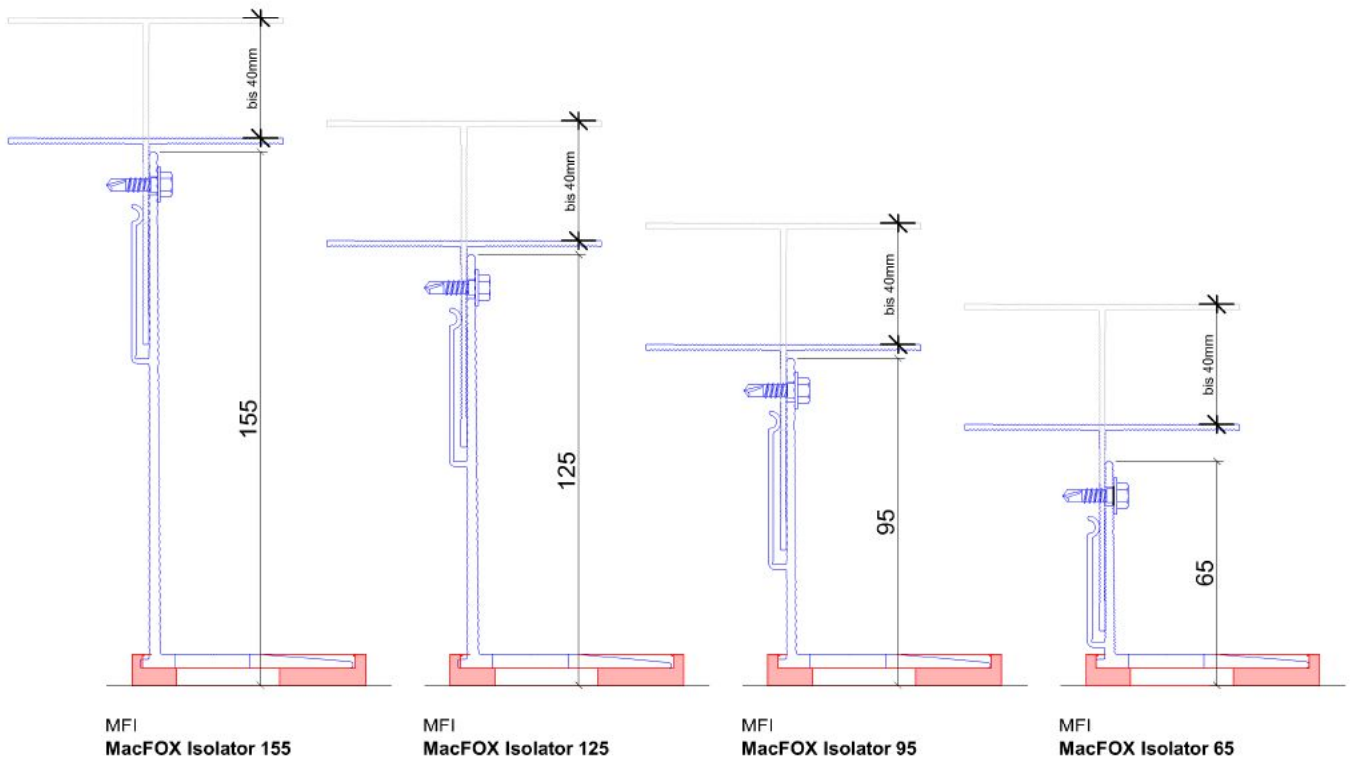


**MacFox Isolator M**

Länge / length	Loch / aperture ø	Bestellbezeichnung / article code	Artikelnummer / order number
185	6.5mm	MFT - MFI 185M 6.5S	02029353
185	11mm	MFT - MFI 185M 11	02029352
185	15mm	MFT - MFI 185M 15	02029753
215	6.5mm	MFT - MFI 215M 6.5S	02029356
215	11mm	MFT - MFI 215M 11	02029355
215	15mm	MFT - MFI 215M 15	02029756
245	6.5mm	MFT - MFI 245M 6.5S	02029359
245	11mm	MFT - MFI 245M 11	02029358
245	15mm	MFT - MFI 245M 15	02029759
275	6.5mm	MFT - MFI 275M 6.5S	02029763
275	11mm	MFT - MFI 275M 11	02029361
275	15mm	MFT - MFI 275M 15	02029762

**MacFox Isolator L**

Länge / length	Loch / aperture ø	Bestellbezeichnung / article code	Artikelnummer / order number
185	6.5mm	MFT - MFI 185L 6.5S	02029752
185	11mm	MFT - MFI 185L 11	02029351
185	15mm	MFT - MFI 185L 15	02029751
215	6.5mm	MFT - MFI 215L 6.5S	02029755
215	11mm	MFT - MFI 215L 11	02029354
215	15mm	MFT - MFI 215L 15	02029754
245	6.5mm	MFT - MFI 245L 6.5S	02029758
245	11mm	MFT - MFI 245L 11	02029357
245	15mm	MFT - MFI 245L 15	02029757
275	6.5mm	MFT - MFI 275L 6.5S	02029761
275	11mm	MFT - MFI 275L 11	02029360
275	15mm	MFT - MFI 275L 15	02029760



**MacFox Isolator M**

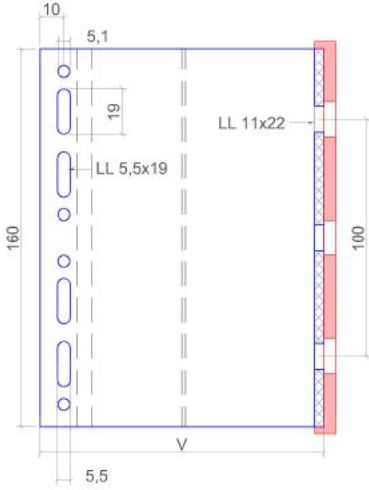
Länge / length	Loch / holepattern ø	Bestellbezeichnung / article code	Artikelnummer / order number
65	6.5mm	MFT - MFI 65M 6.5S	02029342
65	11mm	MFT - MFI 65M 11	02029341
65	15mm	MFT - MFI 65M 15	02029740
95	6.5mm	MFT - MFI 95M 6.5S	02029345
95	11mm	MFT - MFI 95M 11	02029344
95	15mm	MFT - MFI 95M 15	02029743
125	6.5mm	MFT - MFI 125M 6.5S	02029348
125	11mm	MFT - MFI 125M 11	02029347
125	15mm	MFT - MFI 125M 15	02029746
155	6.5mm	MFT - MFI 155M 6.5S	02029750
155	11mm	MFT - MFI 155M 11	02029350
155	15mm	MFT - MFI 155M 15	02029749

**MacFox Isolator L**

Länge / length	Loch / holepattern ø	Bestellbezeichnung / article code	Artikelnummer / order number
65	6.5mm	MFT - MFI 65L 6.5S	02029340
65	11mm	MFT - MFI 65L 11	02029349
65	15mm	MFT - MFI 65L 15	02029739
95	6.5mm	MFT - MFI 95L 6.5S	02029742
95	11mm	MFT - MFI 95L 11	02029343
95	15mm	MFT - MFI 95L 15	02029741
125	6.5mm	MFT - MFI 125L 6.5S	02029745
125	11mm	MFT - MFI 125L 11	02029346
125	15mm	MFT - MFI 125L 15	02029744
155	6.5mm	MFT - MFI 155L 6.5S	02029748
155	11mm	MFT - MFI 155L 11	02029349
155	15mm	MFT - MFI 155L 15	02029747

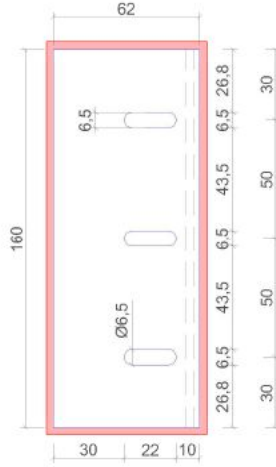
**MFT - MFI L**

**A1L**

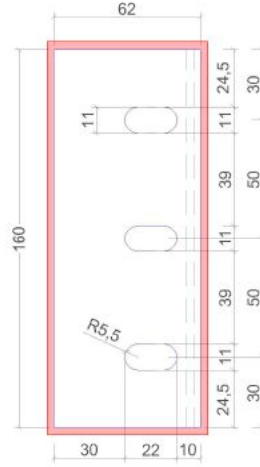


Large L h=160

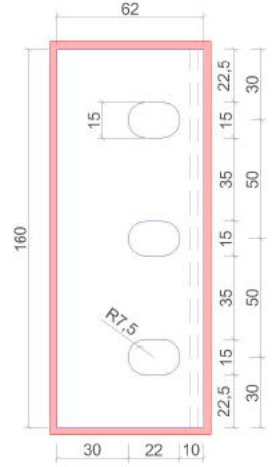
**A2L**



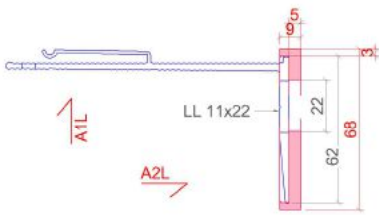
Lochdurchmesser 6,5mm  
holepattern 6,5mm



Lochdurchmesser 11mm  
holepattern 11mm

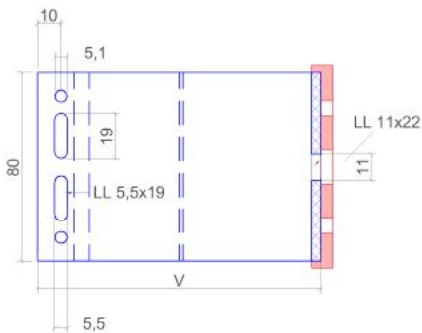


Lochdurchmesser 15mm  
holepattern 15mm



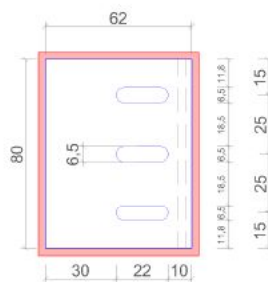
**MFT - MFI M**

**A1M**

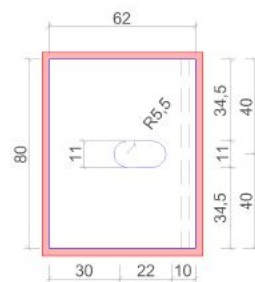


Medium M h=80

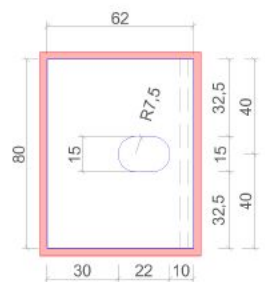
**A2M**



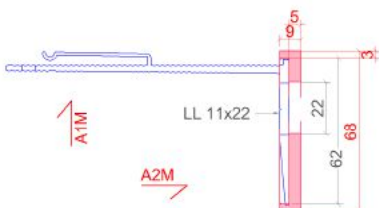
Lochdurchmesser 6,5mm  
holepattern 6,5mm



Lochdurchmesser 11mm  
holepattern 11mm

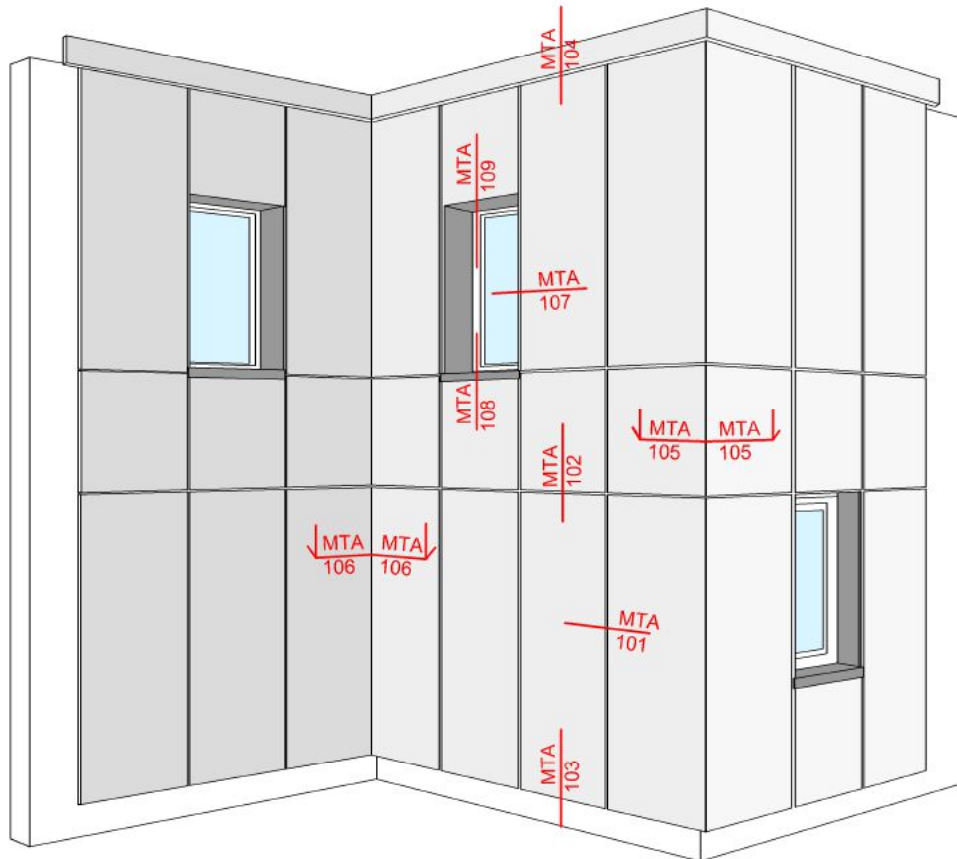


Lochdurchmesser 15mm  
holepattern 15mm





# MTA - V - 100



Fassadenansicht / view of cladding

**INHALT:**

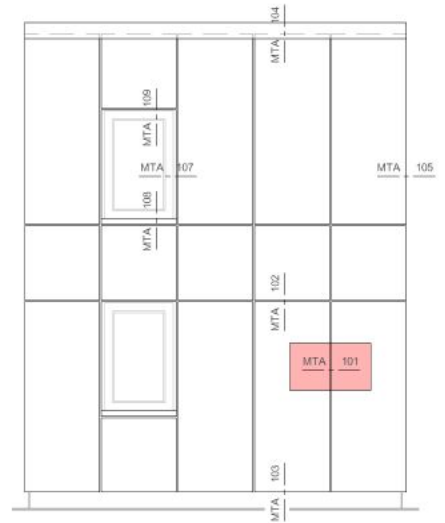
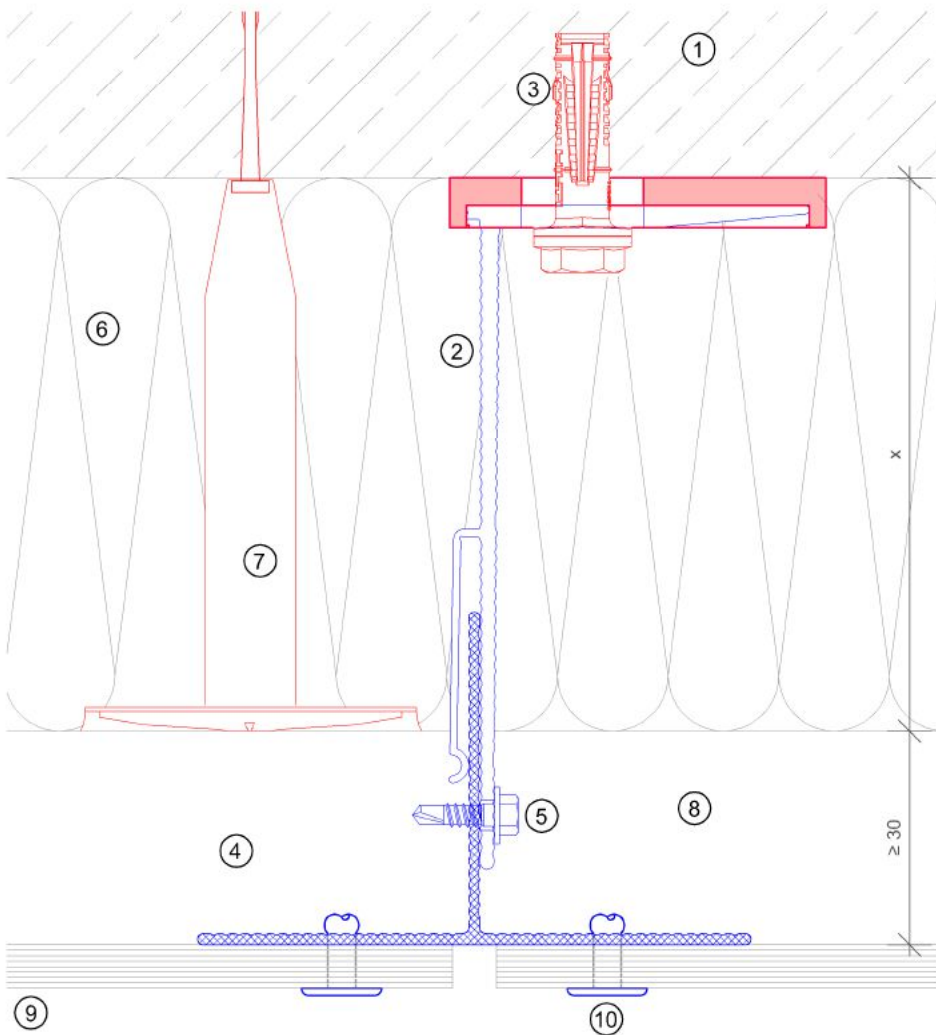
MTA -101	Horizontalschnitt
MTA -102	Vertikalschnitt
MTA -103	Sockelabschluss
MTA -104	Dachanschluss Attika
MTA -105	Aussenecke
MTA -106	Innenecke
MTA -107	Fensterleibung
MTA -108	Fensterbank
MTA -109	Fenstersturz

**CONTENTS:**

MTA -101	horizontal section
MTA -102	vertical section
MTA -103	base detail
MTA -104	head detail
MTA -105	external corner
MTA -106	internal corner
MTA -107	window - reveal
MTA -108	window - sill
MTA -109	window - lintel

MTA 101

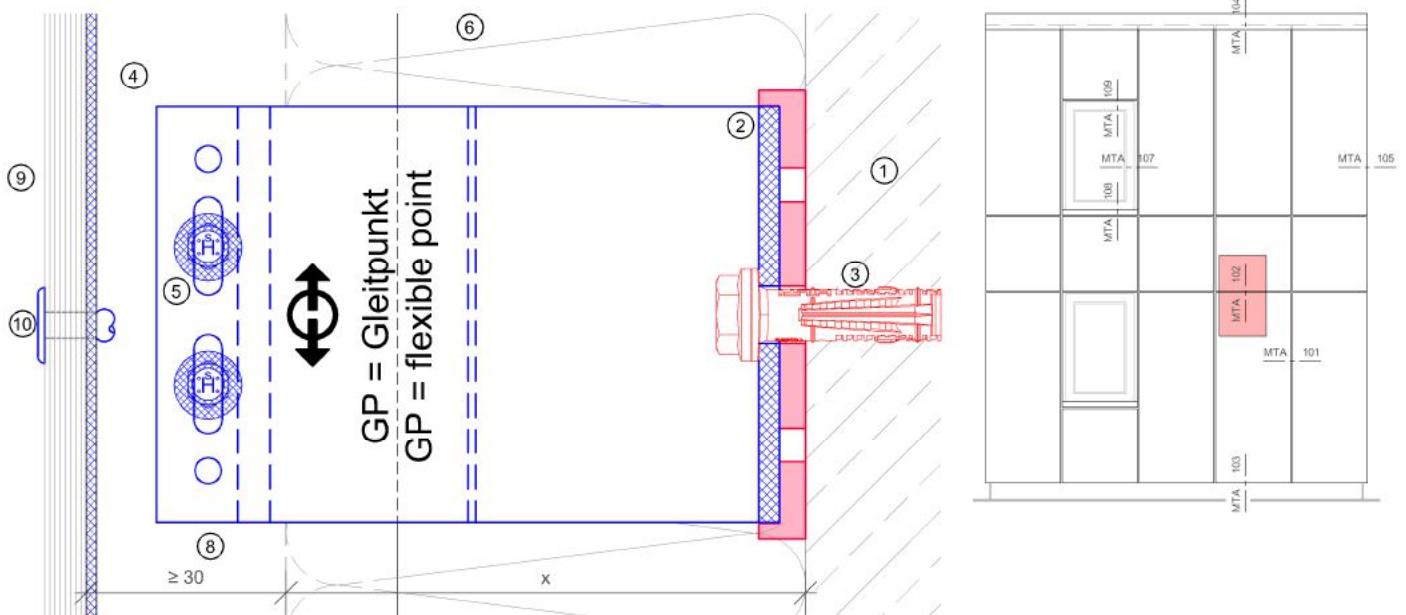
Horizontalschnitt - MacFOX / horizontal section - MacFOX



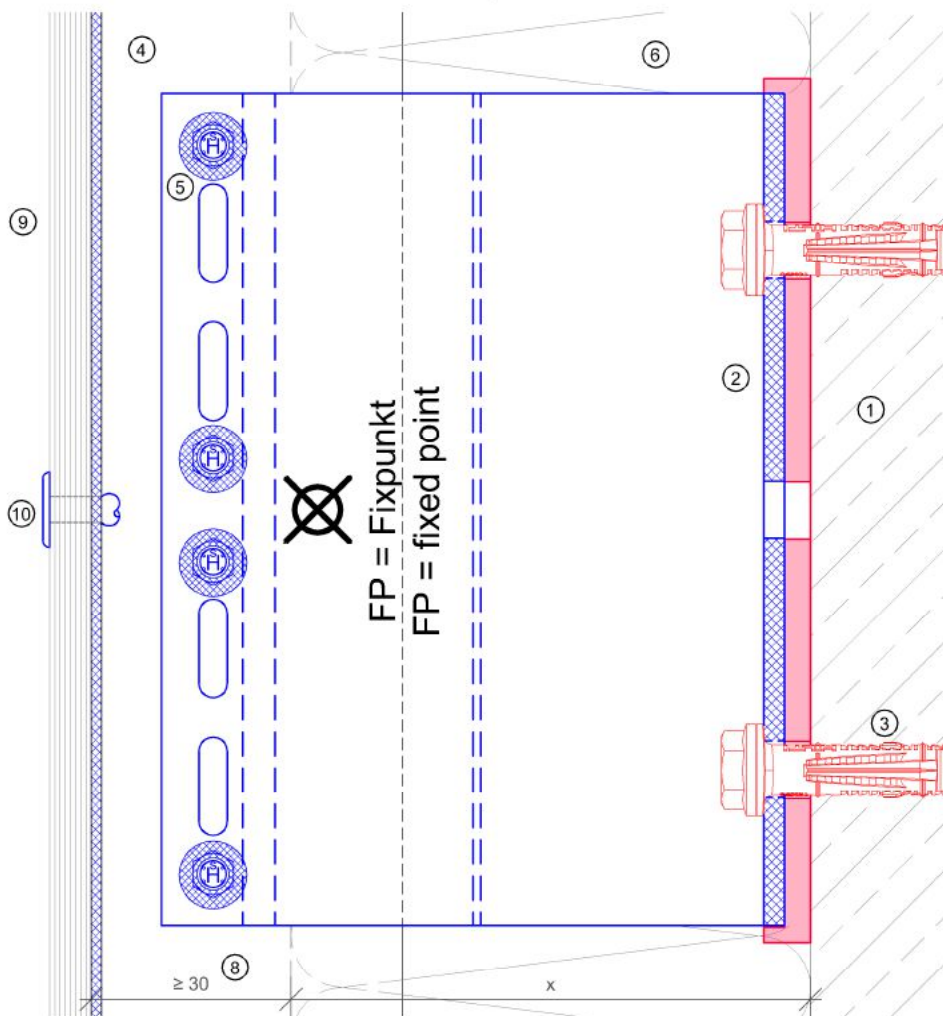
Legende	
1	Untergrund/ basement
2	Distanzhalter + Isolator/ bracket + isolator
3	Dübel lt. Statik/ anchor acc. to static
4	Tragprofil/ profile
5	Bohrschraube/ self drilling srew
6	Wärmedämmung/ insulation
7	Befestigung WD/ fixing insulation
8	Hinterlüftung/ ventilation
9	Fassadenplatte/ cladding
10	Befestigung Platte/ fixing cladding

MTA 102

Vertikalschnitt-Gleitpunkt / vertical section-flexible point



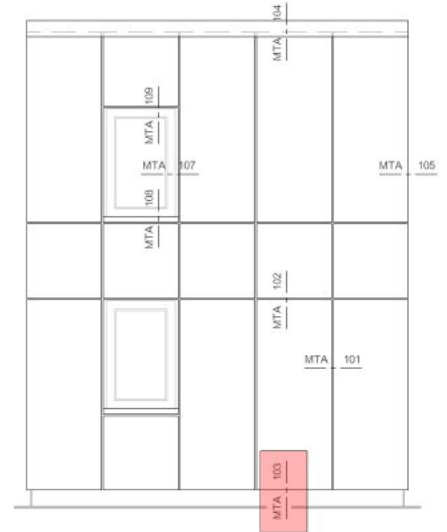
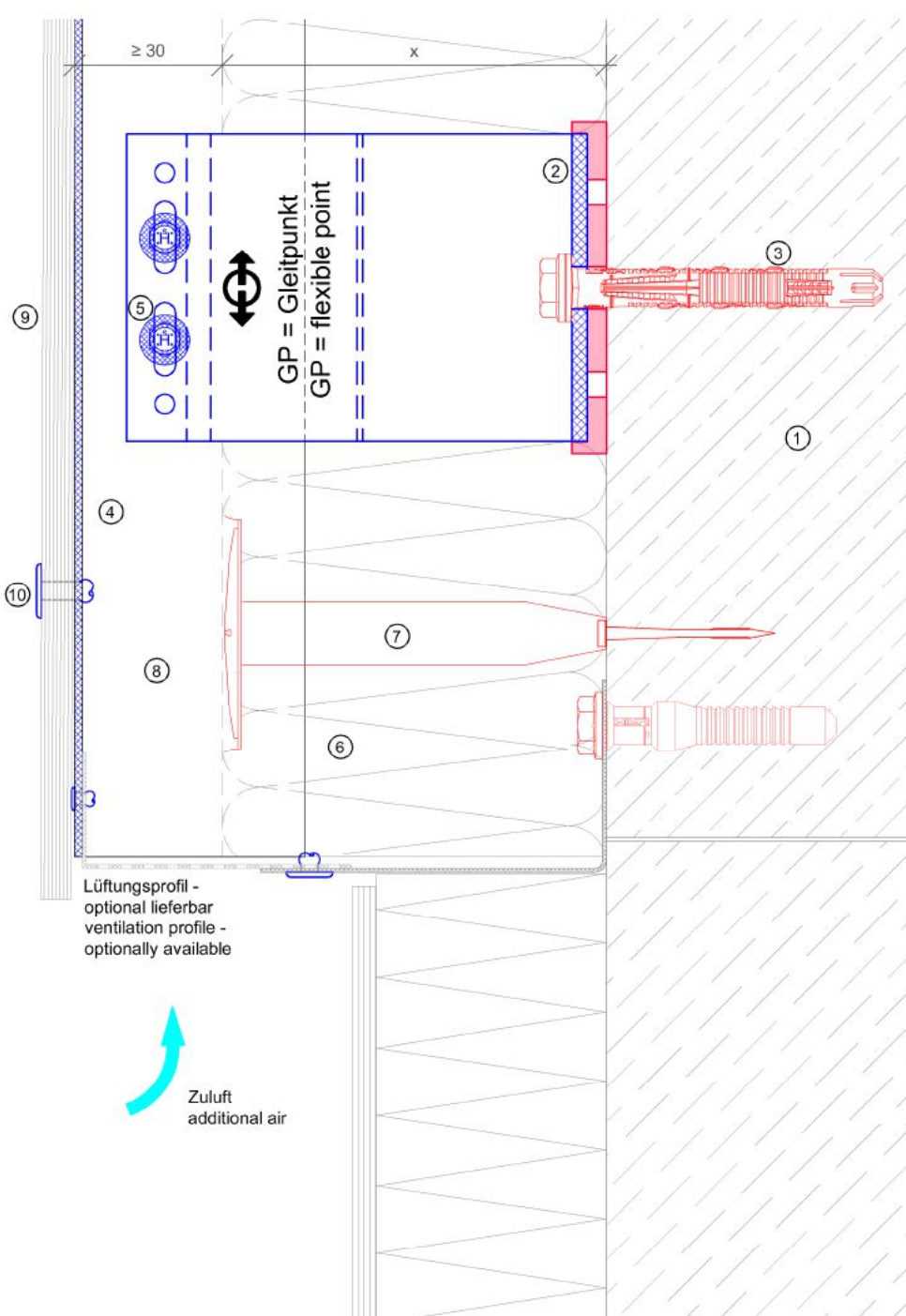
Vertikalschnitt-Fixpunkt / vertical section-fixed point



Legende	
1	Untergrund/ basement
2	Distanzhalter + Isolator/ bracket + isolator
3	Dübel lt. Statik/ anchor acc. to static
4	Tragprofil/ profile
5	Bohrschraube/ self drilling srew
6	Wärmedämmung/ insulation
7	Befestigung WD/ fixing insulation
8	Hinterlüftung/ ventilation
9	Fassadenplatte/ cladding
10	Befestigung Platte/ fixing cladding

MTA 103

Vertikalschnitt - Sockelabschluss / vertical section - base detail

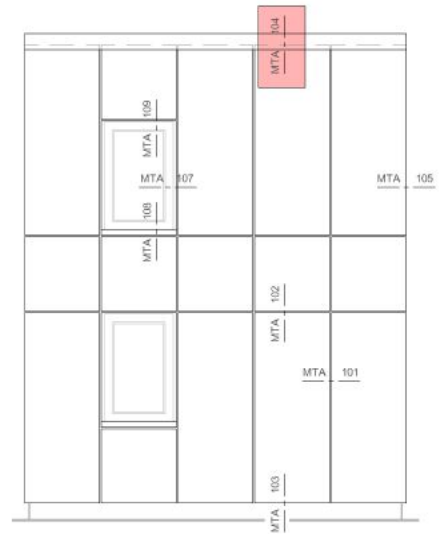
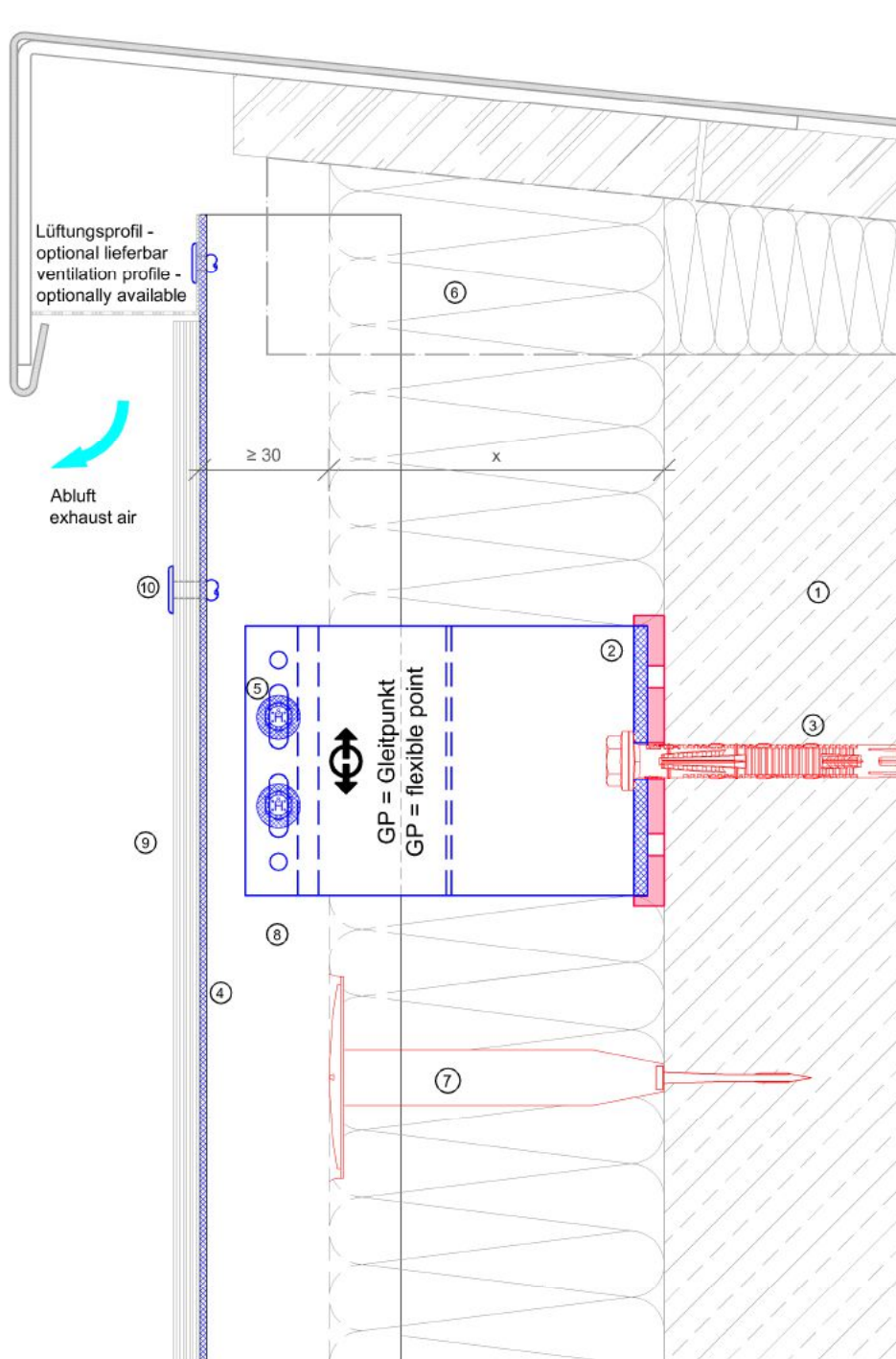


Legende	
1	Untergrund/ basement
2	Distanzhalter + Isolator/ bracket + isolator
3	Dübel lt. Statik/ anchor acc. to static
4	Tragprofil/ profile
5	Bohrschraube/ self drilling srew
6	Wärmedämmung/ insulation
7	Befestigung WD/ fixing insulation
8	Hinterlüftung/ ventilation
9	Fassadenplatte/ cladding
10	Befestigung Platte/ fixing cladding



MTA 104

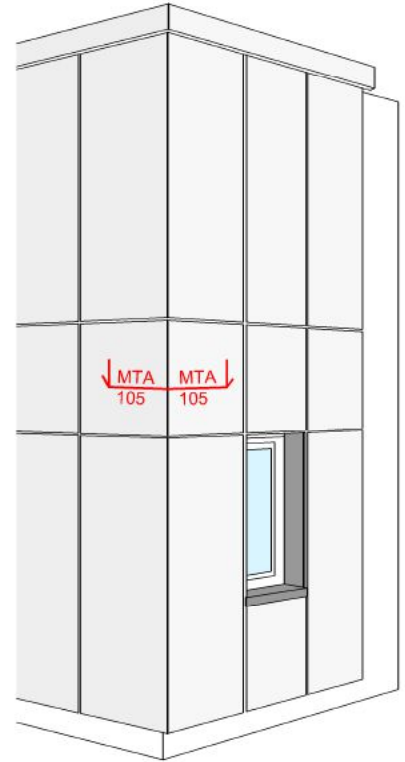
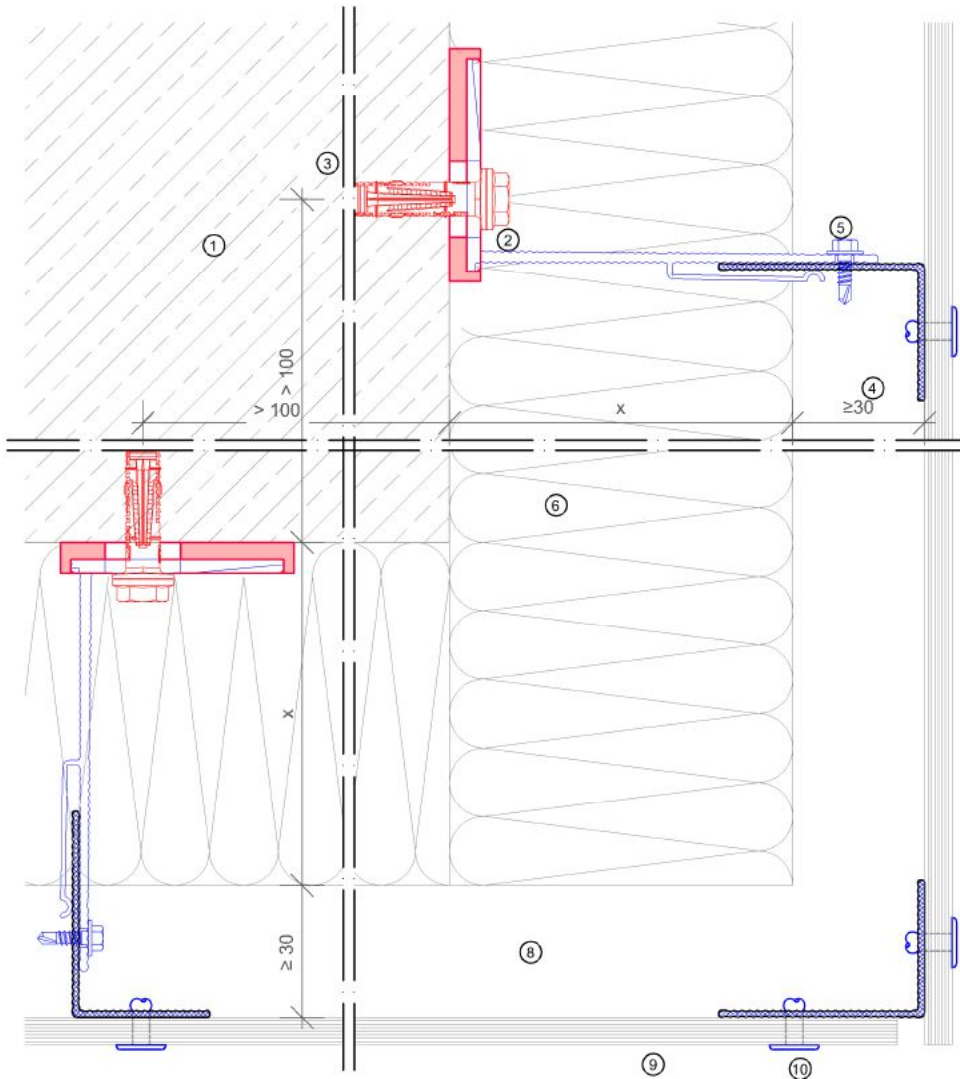
Vertikalschnitt - Dachanschluss Attika / vertical section - head detail



Legende	
1	Untergrund/ basement
2	Distanzhalter + Isolator/ bracket + isolator
3	Dübel lt. Statik/ anchor acc. to static
4	Tragprofil/ profile
5	Bohrschraube/ self drilling srew
6	Wärmedämmung/ insulation
7	Befestigung WD/ fixing insulation
8	Hinterlüftung/ ventilation
9	Fassadenplatte/ cladding
10	Befestigung Platte/ fixing cladding

MTA 105

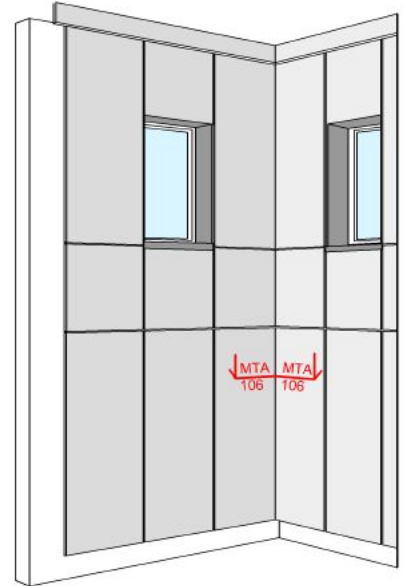
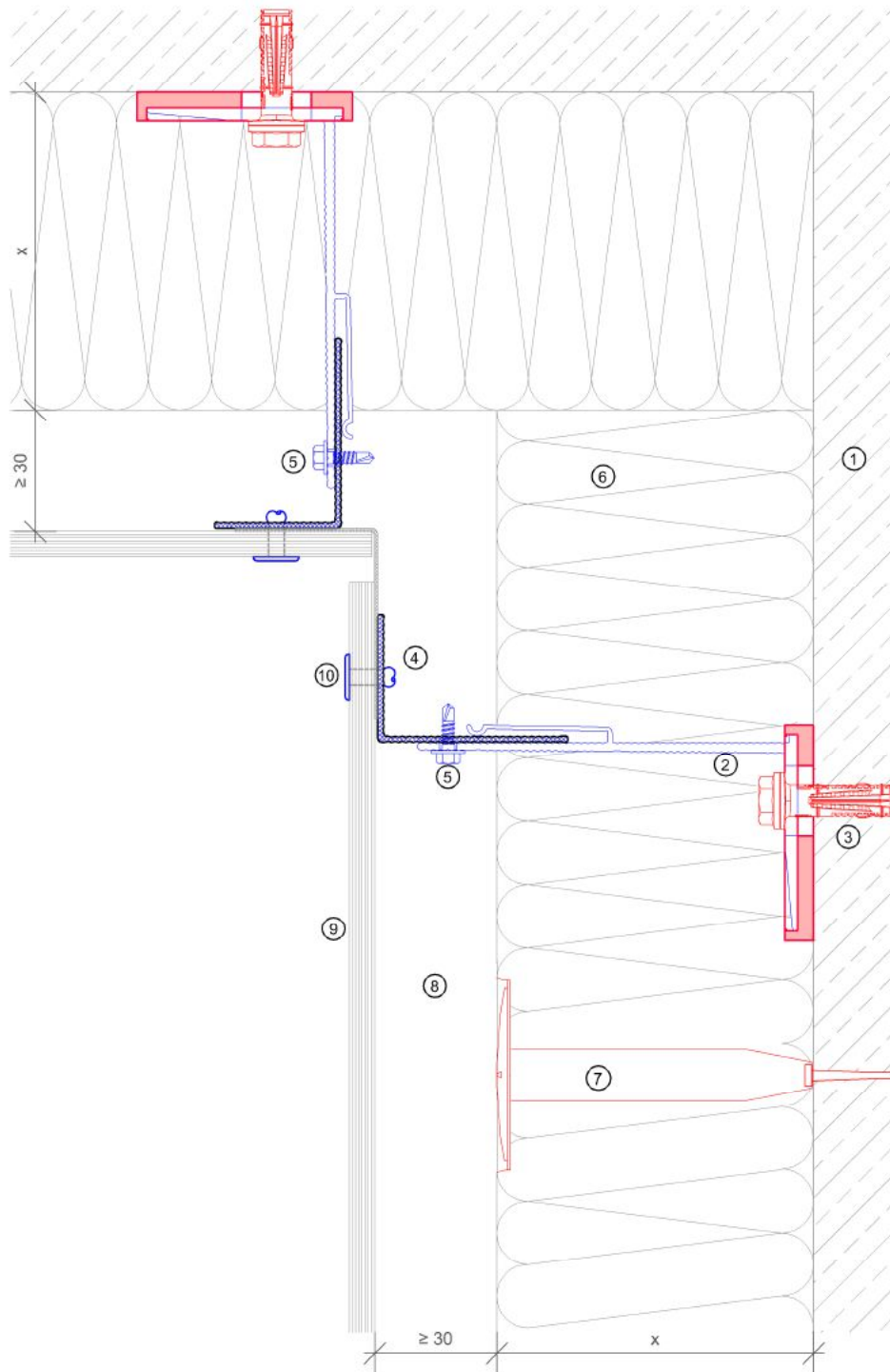
Horizontalschnitt - Aussenecke / horizontal section - external corner



Legende	
1	Untergrund/ basement
2	Distanzhalter + Isolator/ bracket + isolator
3	Dübel lt. Statik/ anchor acc. to static
4	Tragprofil/ profile
5	Bohrschraube/ self drilling srew
6	Wärmedämmung/ insulation
7	Befestigung WD/ fixing insulation
8	Hinterlüftung/ ventilation
9	Fassadenplatte/ cladding
10	Befestigung Platte/ fixing cladding

MTA 106

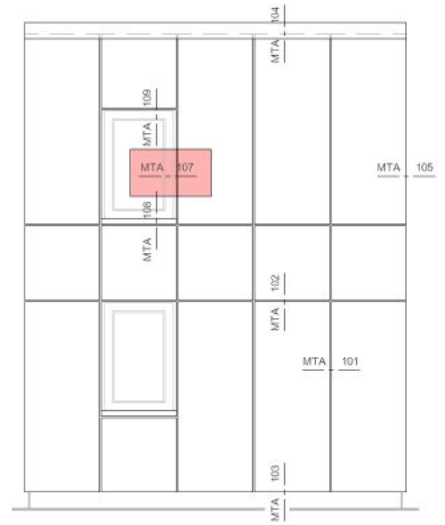
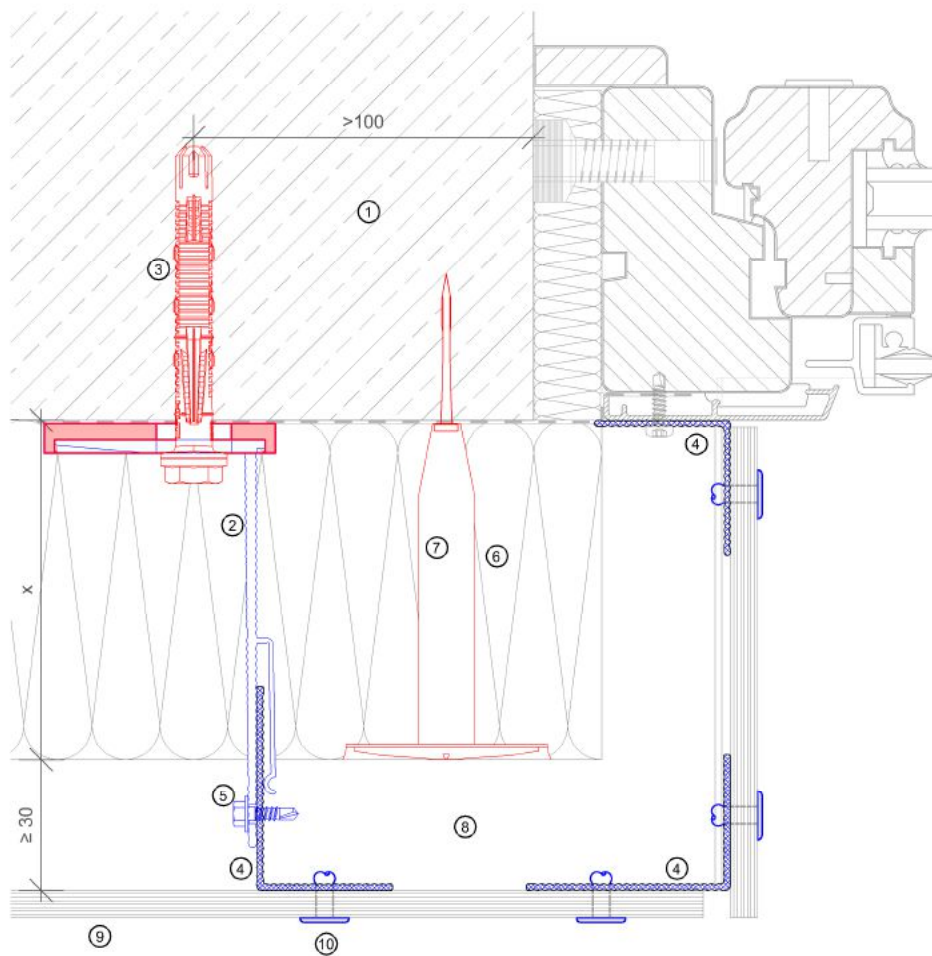
Horizontalschnitt - Innenecke / horizontal section - internal corner



Legende	
1	Untergrund/ basement
2	Distanzhalter + Isolator/ bracket + isolator
3	Dübel lt. Statik/ anchor acc. to static
4	Tragprofil/ profile
5	Bohrschraube/ self drilling srew
6	Wärmedämmung/ insulation
7	Befestigung WD/ fixing insulation
8	Hinterlüftung/ ventilation
9	Fassadenplatte/ cladding
10	Befestigung Platte/ fixing cladding

MTA 107

Horizontalschnitt - Fensterleibung / horizontal section - window - reveal

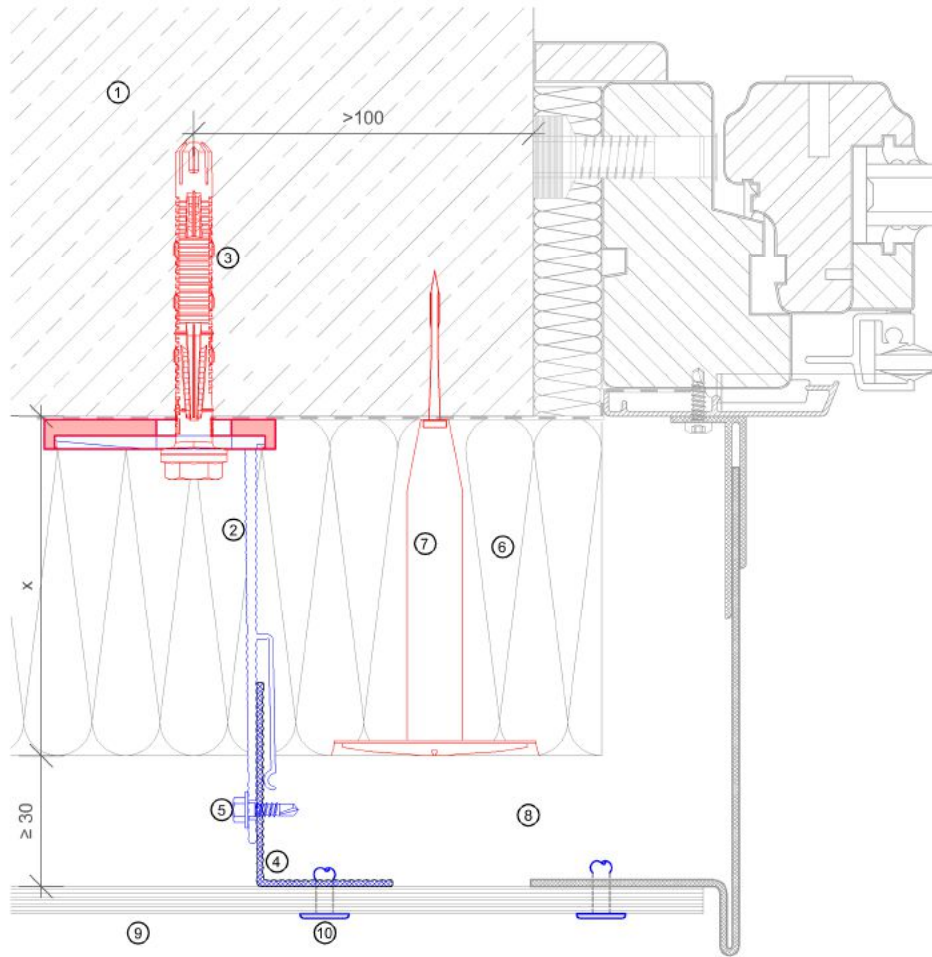


Legende	
1	Untergrund/ basement
2	Distanzhalter + Isolator/ bracket + isolator
3	Dübel lt. Statik/ anchor acc. to static
4	Tragprofil/ profile
5	Bohrschraube/ self drilling srew
6	Wärmedämmung/ insulation
7	Befestigung WD/ fixing insulation
8	Hinterlüftung/ ventilation
9	Fassadenplatte/ cladding
10	Befestigung Platte/ fixing cladding



MTA 107.1

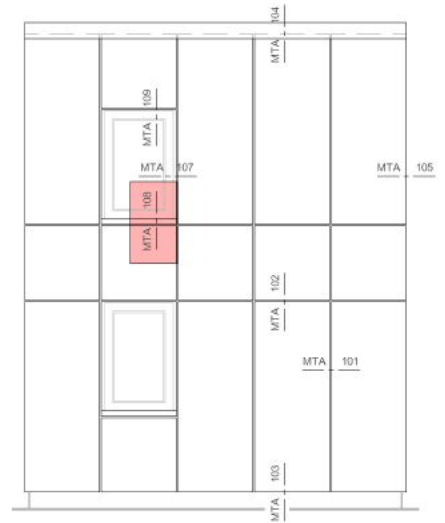
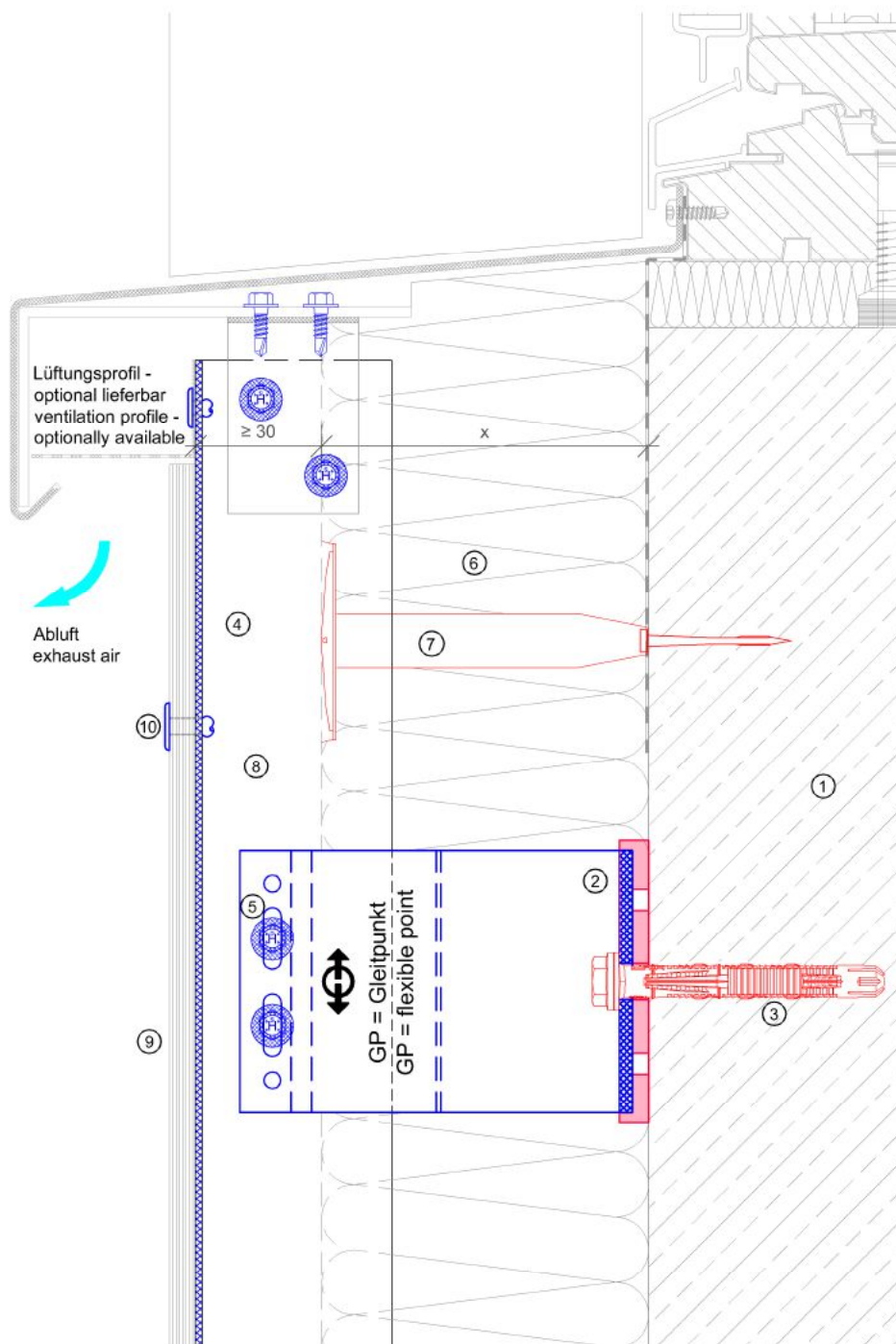
Horizontalschnitt - Fensterleibung / horizontal section - window - reveal



Legende	
1	Untergrund/ basement
2	Distanzhalter + Isolator/ bracket + isolator
3	Dübel lt. Statik/ anchor acc. to static
4	Tragprofil/ profile
5	Bohrschraube/ self drilling srew
6	Wärmedämmung/ insulation
7	Befestigung WD/ fixing insulation
8	Hinterlüftung/ ventilation
9	Fassadenplatte/ cladding
10	Befestigung Platte/ fixing cladding

MTA 108

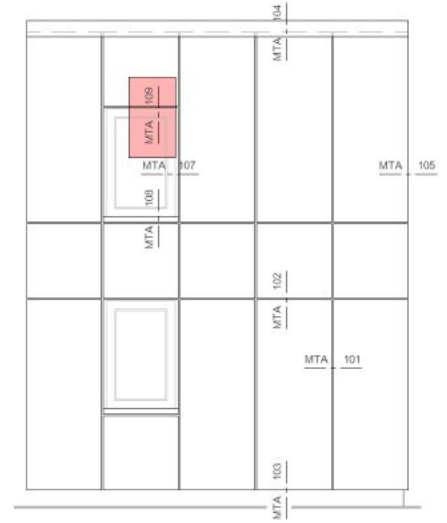
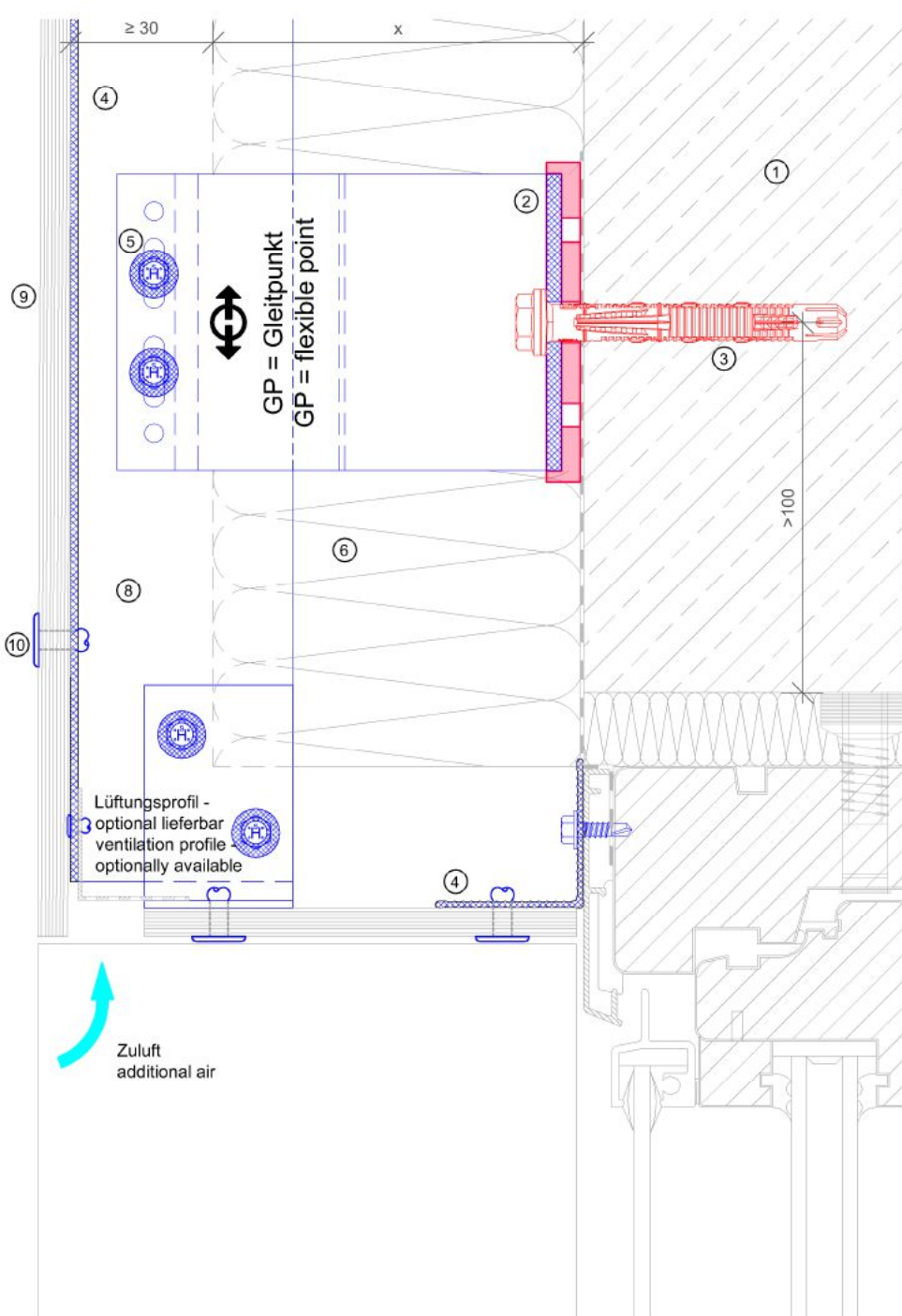
Vertikalschnitt - Fensterbank / vertical section - window - sill



Legende	
1	Untergrund/ basement
2	Distanzhalter + Isolator/ bracket + isolator
3	Dübel lt. Statik/ anchor acc. to static
4	Tragprofil/ profile
5	Bohrschraube/ self drilling srew
6	Wärmedämmung/ insulation
7	Befestigung WD/ fixing insulation
8	Hinterlüftung/ ventilation
9	Fassadenplatte/ cladding
10	Befestigung Platte/ fixing cladding

MTA 109

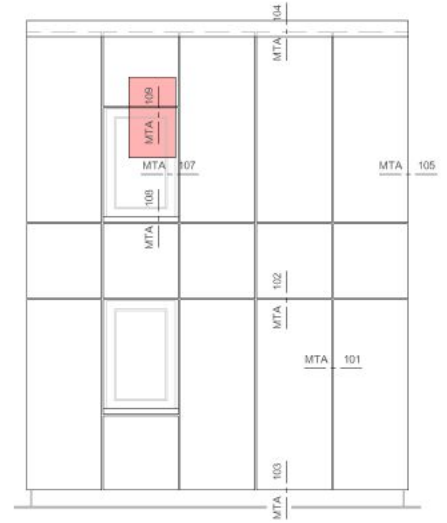
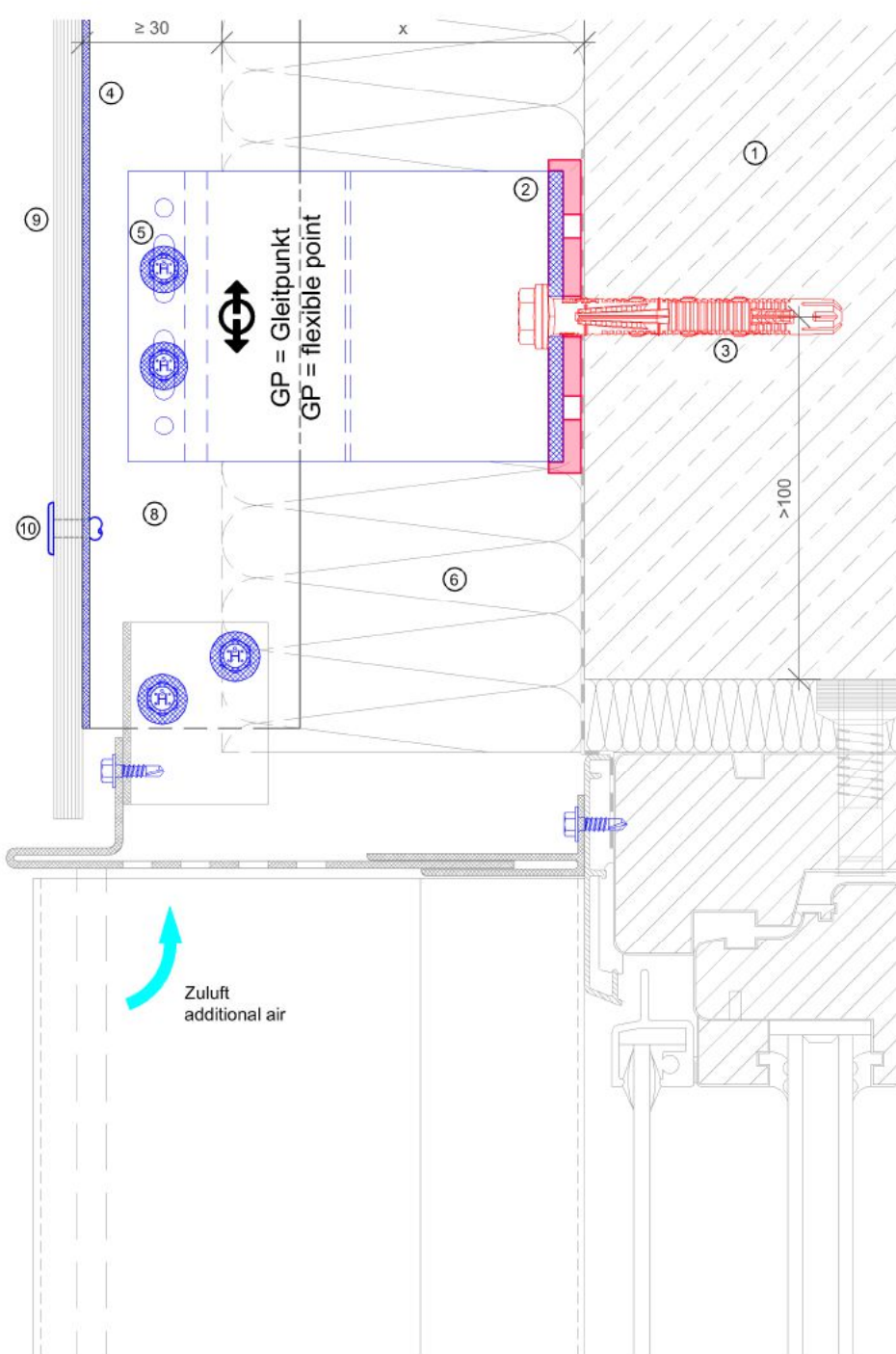
Vertikalschnitt - Fenstersturz / vertical section - window - lintel



Legende	
1	Untergrund/ basement
2	Distanzhalter + Isolator/ bracket + isolator
3	Dübel lt. Statik/ dowel acc. to static
4	Tragprofil/ profile
5	Bohrschraube/ self drilling srew
6	Wärmedämmung/ insulation
7	Befestigung WD/ fixing insulation
8	Hinterlüftung/ ventilation
9	Fassadenplatte/ cladding
10	Befestigung Platte/ fixing cladding

MTA 109.1

Vertikalschnitt - Fenstersturz / vertical section - window - lintel

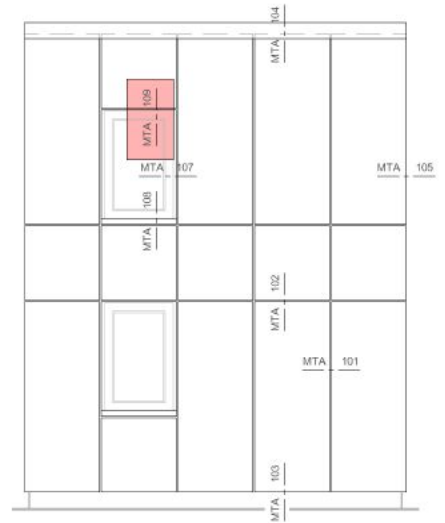
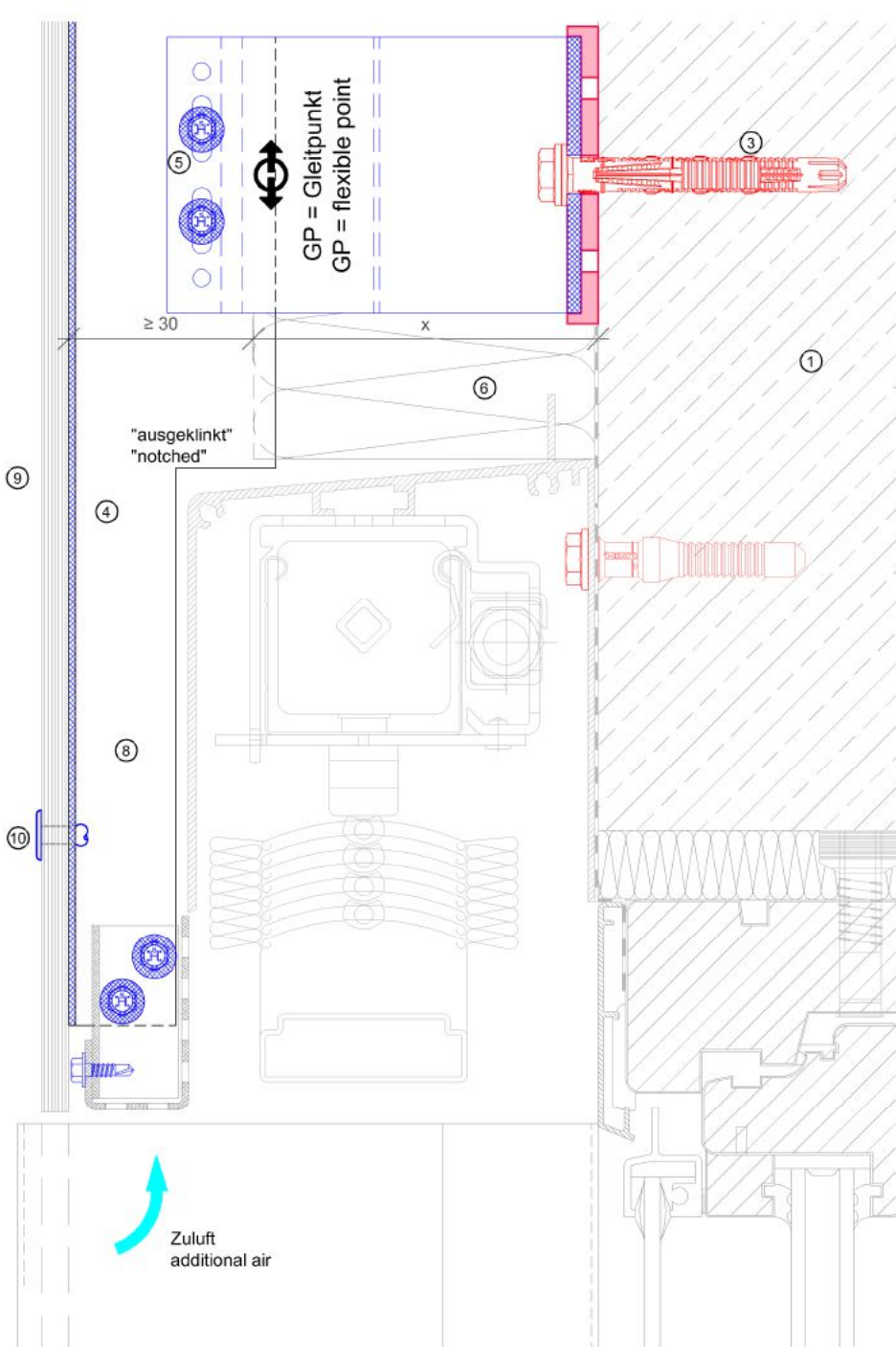


Legende	
1	Untergrund/ basement
2	Distanzhalter + Isolator/ bracket + isolator
3	Dübel lt. Statik/ anchor acc. to static
4	Tragprofil/ profile
5	Bohrschraube/ self drilling srew
6	Wärmedämmung/ insulation
7	Befestigung WD/ fixing insulation
8	Hinterlüftung/ ventilation
9	Fassadenplatte/ cladding
10	Befestigung Platte/ fixing cladding



MTA 109.2

Vertikalschnitt - Fenstersturz / vertical section - window - lintel



Legende	
1	Untergrund/ basement
2	Distanzhalter + Isolator/ bracket + isolator
3	Dübel lt. Statik/ anchor acc. to static
4	Tragprofil/ profile
5	Bohrschraube/ self drilling srew
6	Wärmedämmung/ insulation
7	Befestigung WD/ fixing insulation
8	Hinterlüftung/ ventilation
9	Fassadenplatte/ cladding
10	Befestigung Platte/ fixing cladding