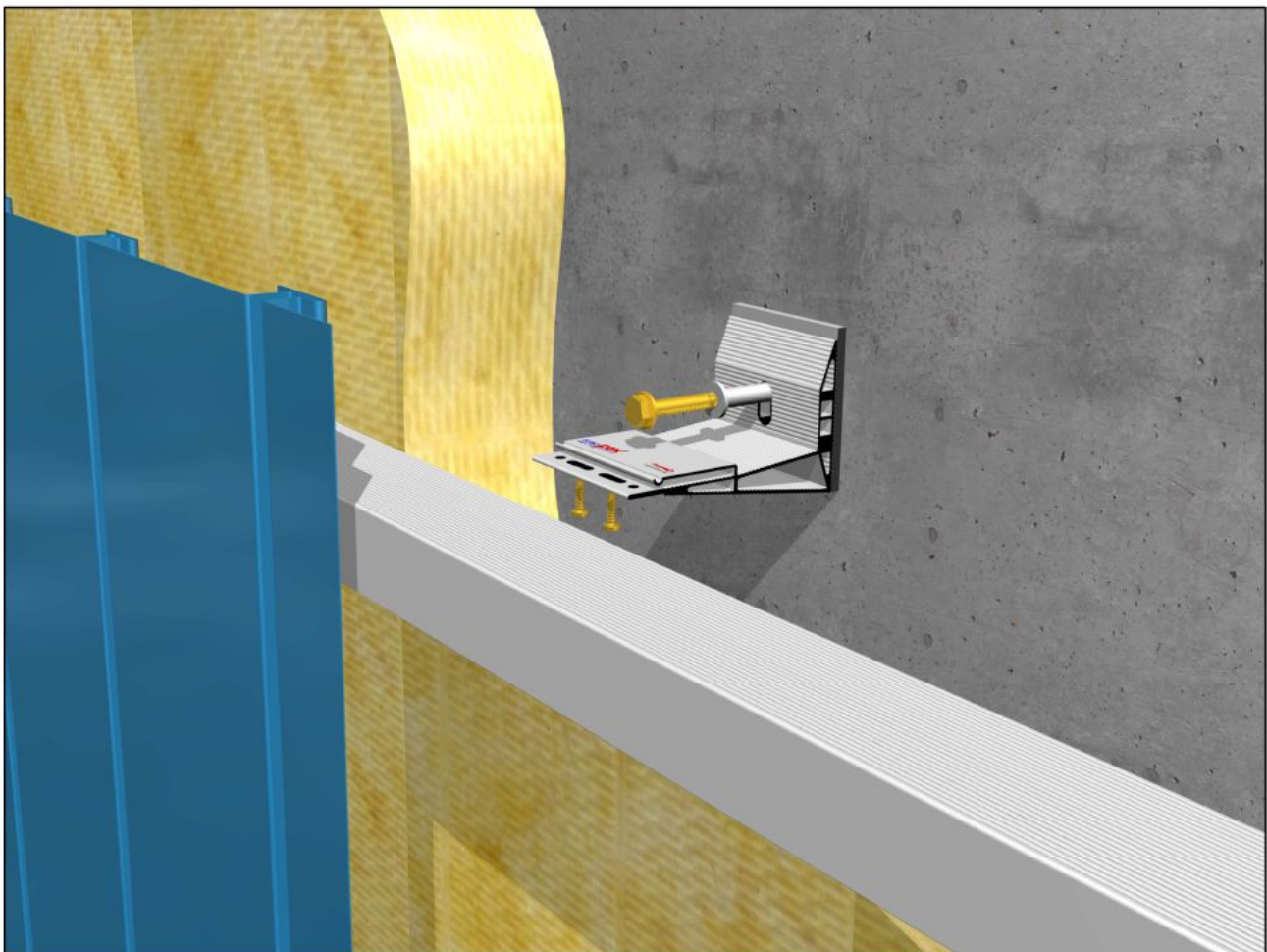
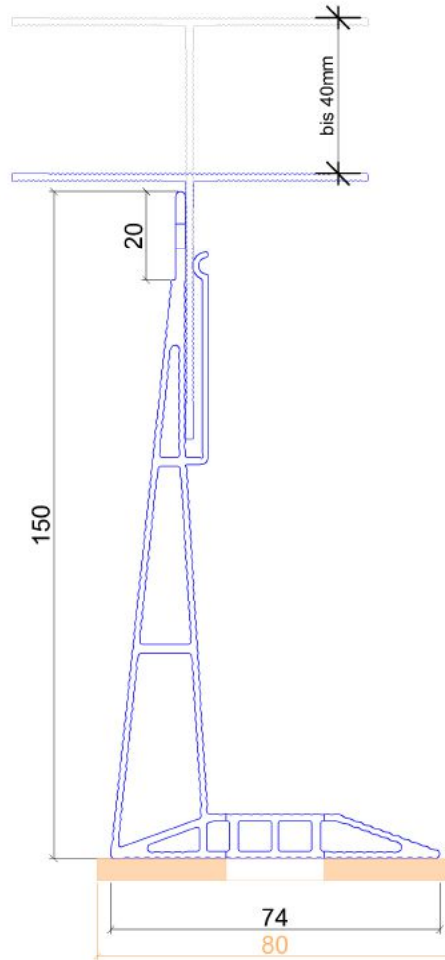
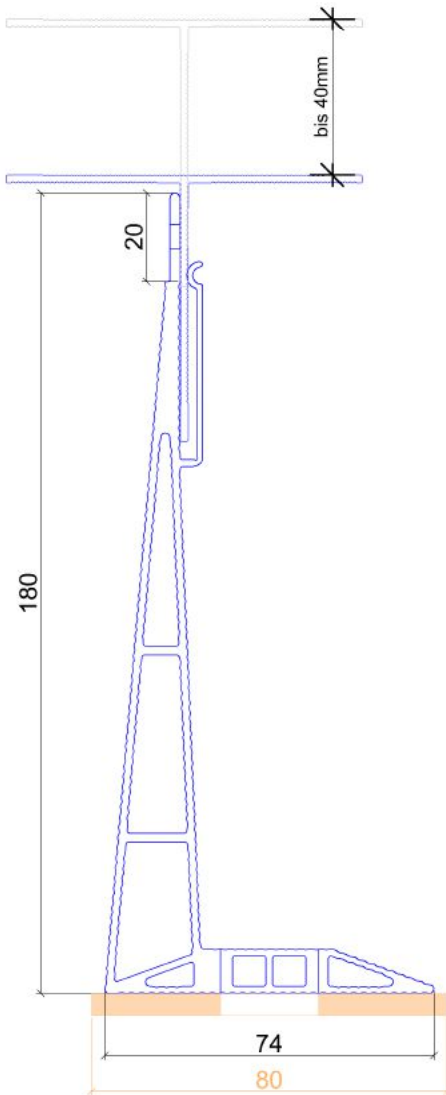


XLA - h - 100

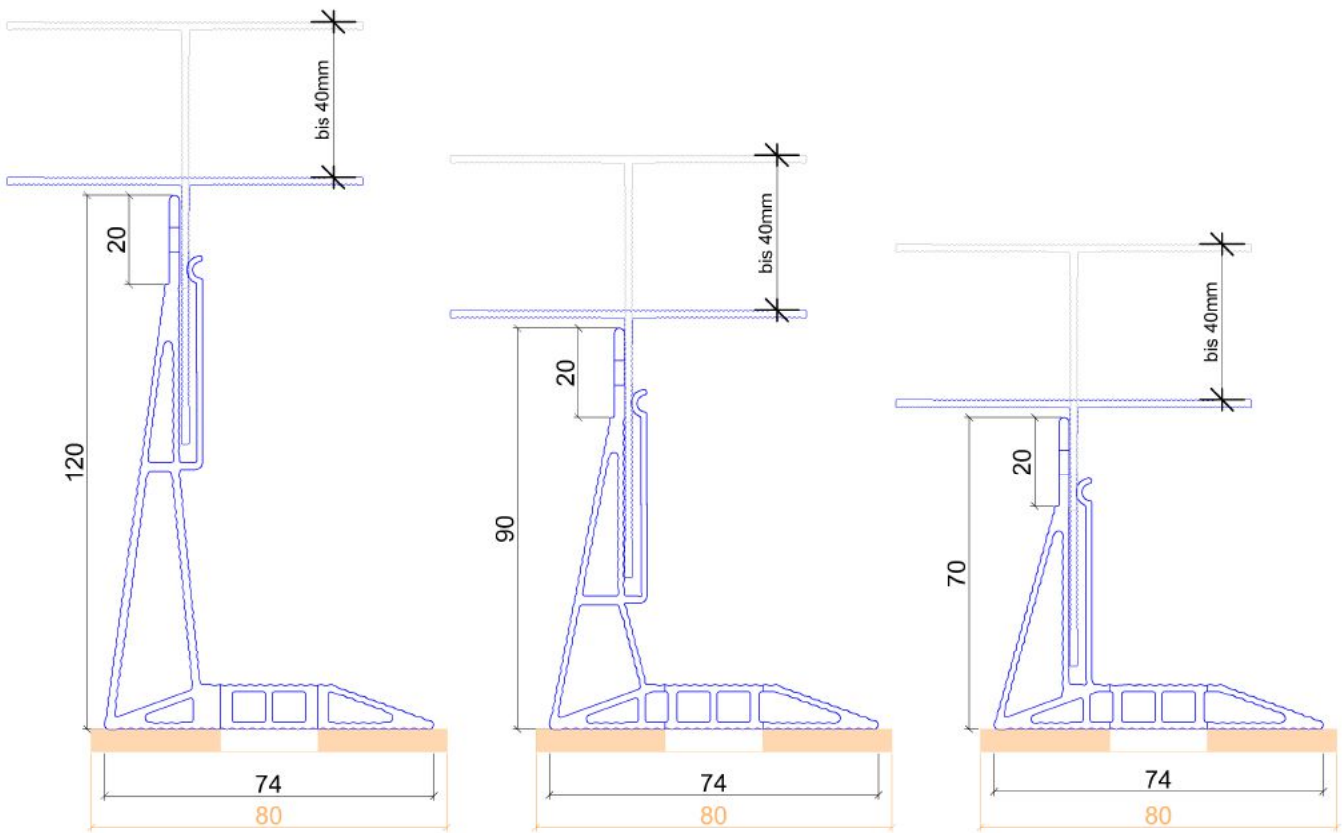
ALU - Unterkonstruktion für
hinterlüftete Fassadenbekleidung
System zur sichtbaren Befestigung mittels Nieten/ Schrauben

aluminium support system for rainscreen cladding
system for the visible attachment
fixed by rivet/ screw



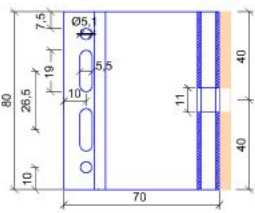


Länge / length	Loch / holepattern ø	Bestellbezeichnung / article code	Artikelnummer / order number
70	6.5mm	MFT - XF 070 M 6.5/2	02029765
70	11mm	MFT - XF 070 M 11	02029363
90	6.5mm	MFT - XF 090 M 6.5/2	02029770
90	11mm	MFT - XF 090 M 11	02029768
120	6.5mm	MFT - XF 120 M 6.5/2	02029774
120	11mm	MFT - XF 120 M 11	02029773
150	6.5mm	MFT - XF 150 M 6.5/2	02029778
150	11mm	MFT - XF 150 M 11	02029777
180	6.5mm	MFT - XF 180 M 6.5/2	02029782
180	11mm	MFT - XF 180 M 11	02029781

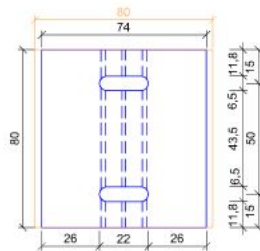


Länge / length	Loch / holepattern ø	Bestellbezeichnung / article code	Artikelnummer / order number
70	6.5mm	MFT - XF 070 L 6.5/2	02029764
70	11mm	MFT - XF 070 L 11	02029362
90	6.5mm	MFT - XF 090 L 6.5/2	02029767
90	11mm	MFT - XF 090 L 11	02029766
120	6.5mm	MFT - XF 120 L 6.5/2	02029772
120	11mm	MFT - XF 120 L 11	02029771
150	6.5mm	MFT - XF 150 L 6.5/2	02029776
150	11mm	MFT - XF 150 L 11	02029775
180	6.5mm	MFT - XF 180 L 6.5/2	02029780
180	11mm	MFT - XF 180 L 11	02029779

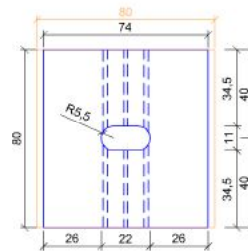
MFT - XF M



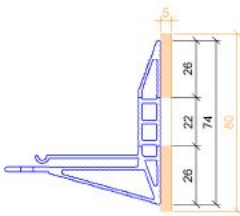
Medium M h=80



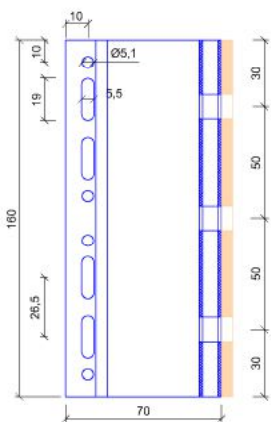
Lochdurchmesser 6,5mm
holepattern 6,5mm



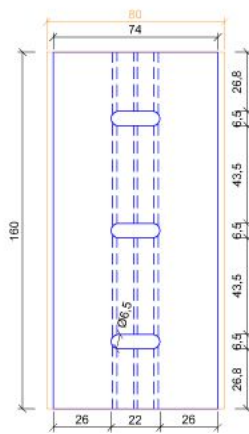
Lochdurchmesser 11mm
holepattern 11mm



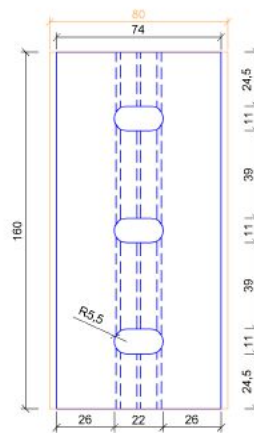
MFT - XF L



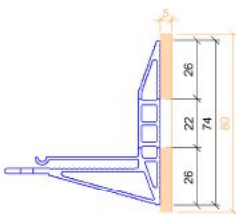
Large L h=160



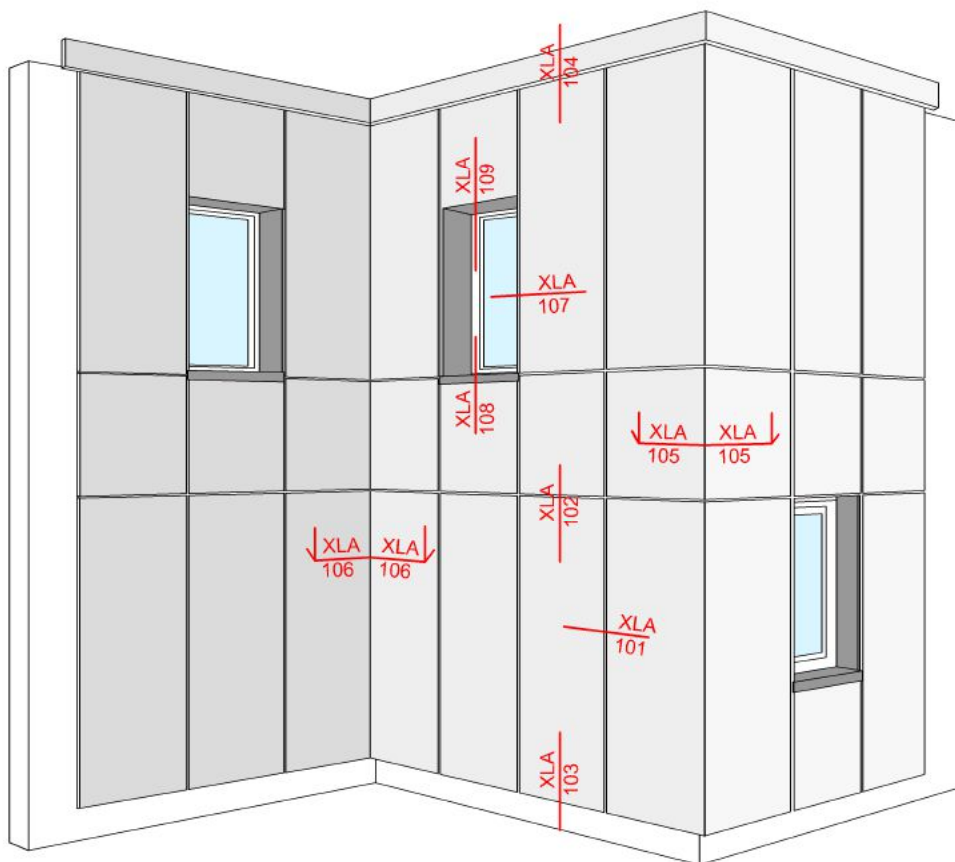
Lochdurchmesser 6,5mm
holepattern 6,5mm



Lochdurchmesser 11mm
holepattern 11mm



XLA - h - 100



Fassadenansicht / view of cladding

INHALT:

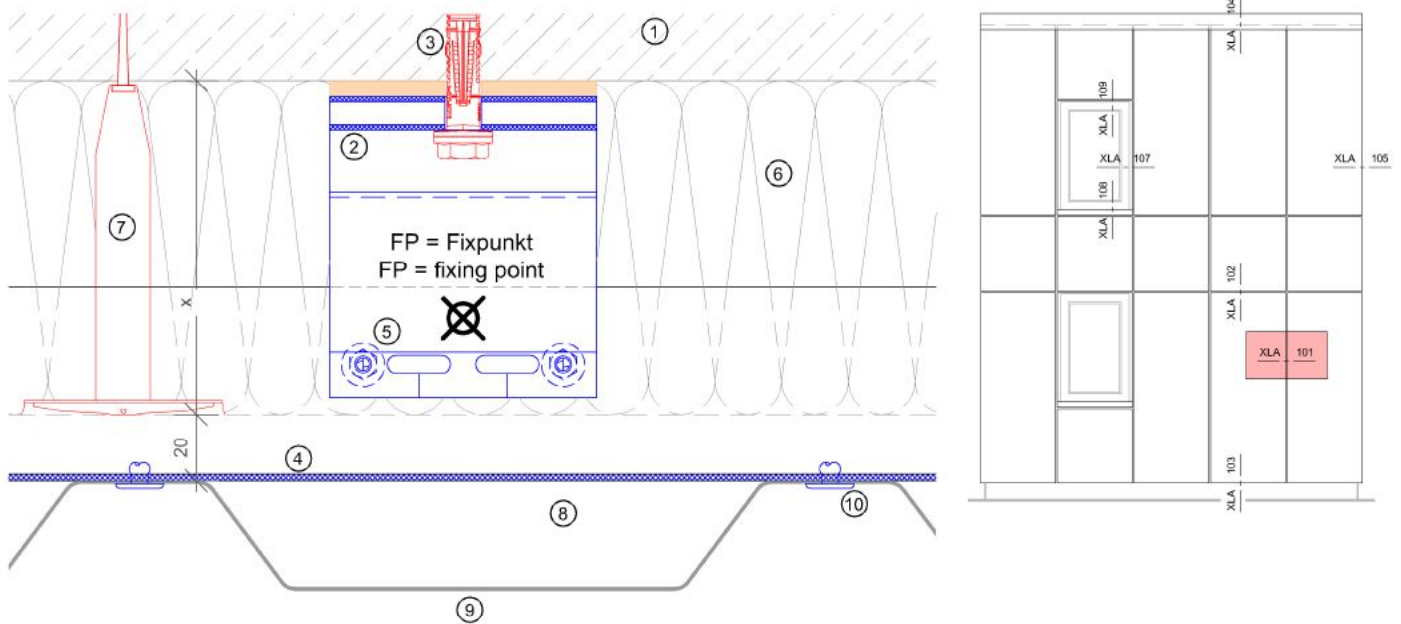
XLA -101	Horizontalschnitt
XLA -102	Vertikalschnitt
XLA -103	Sockelabschluss
XLA -104	Dachanschluss Attika
XLA -105	Aussenecke
XLA -106	Innenecke
XLA -107	Fensterleibung
XLA -108	Fensterbank
XLA -109	Fenstersturz

CONTENTS:

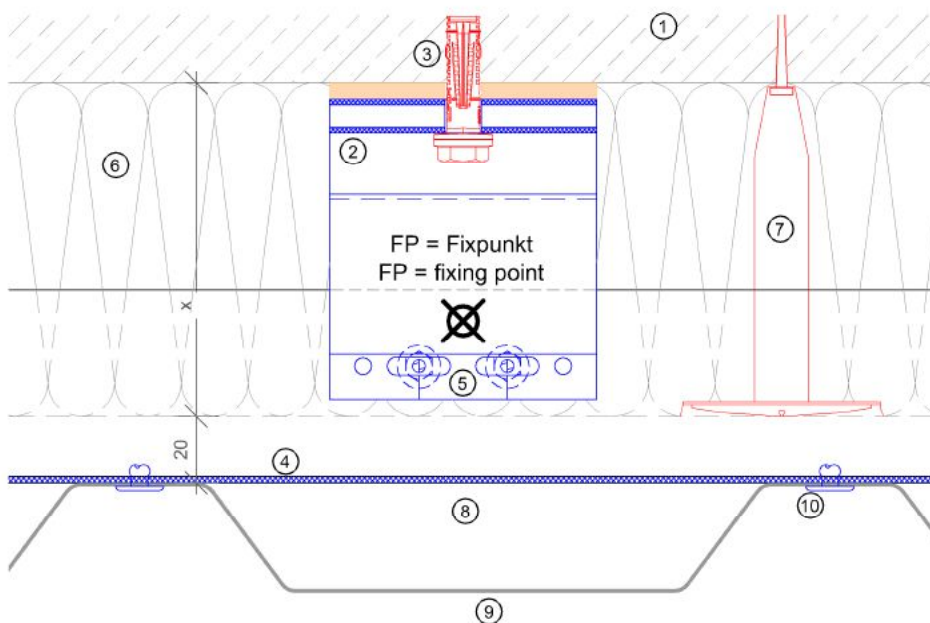
XLA -101	horizontal section
XLA -102	vertical section
XLA -103	base detail
XLA -104	head detail
XLA -105	external corner
XLA -106	internal corner
XLA -107	window - reveal
XLA -108	window - sill
XLA -109	window - lintel

XLA - 101

Horizontalschnitt - X-FOX M Fixpunkt / horizontal section - X-FOX M fixed point



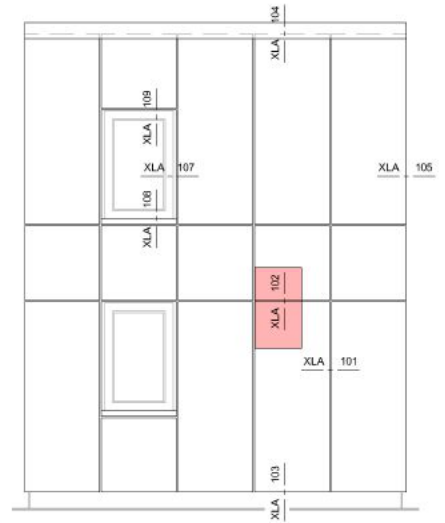
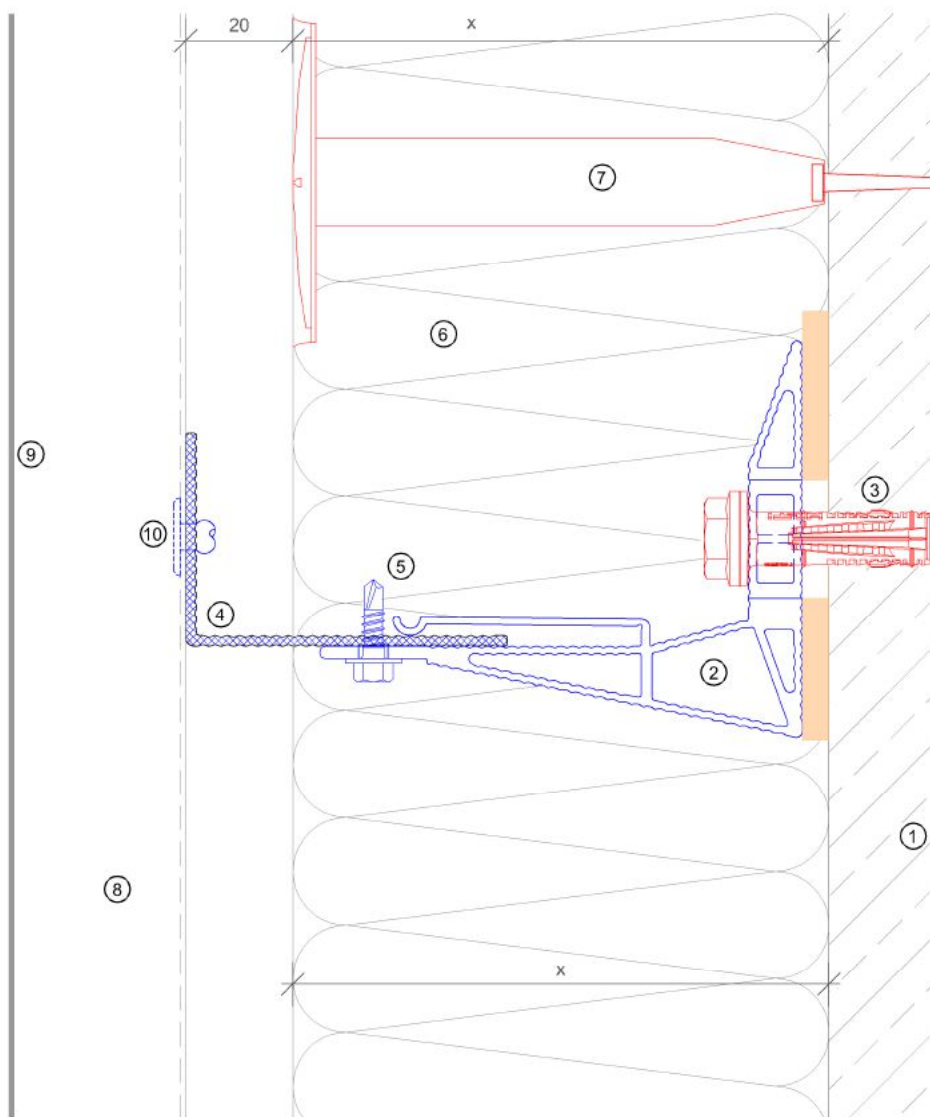
Horizontalschnitt - X-FOX M Gleitpunkt / horizontal section - X-FOX M flexible point



Legende	
1	Untergrund/ base material
2	Distanzhalter + Isolator/ bracket + isolator
3	Dübel lt. Statik/ anchor acc. to static
4	Tragprofil/ profile
5	Bohrschraube/ self drilling screw
6	Wärmedämmung/ insulation
7	Befestigung WD/ fixing insulation
8	Hinterlüftung/ ventilation
9	Fassadenplatte/ cladding
10	Befestigung Platte/ fixing cladding

XLA - 102

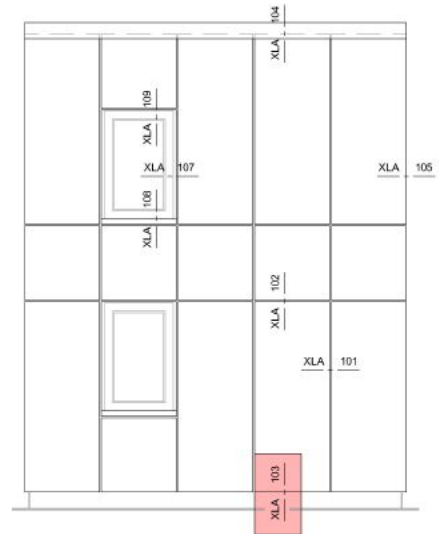
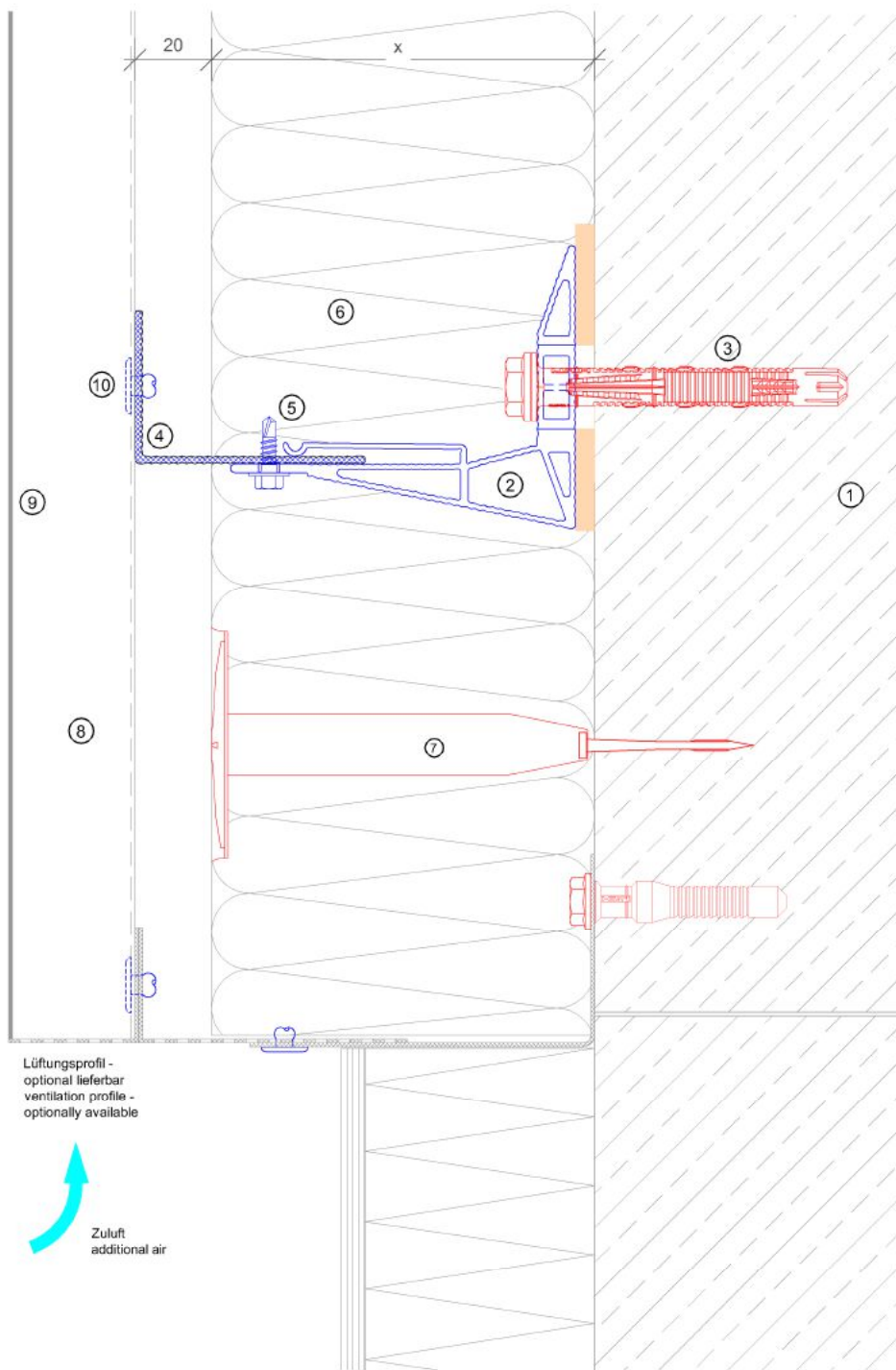
Vertikalschnitt - X-FOX / vertical section - X-FOX



Legende	
1	Untergrund/ base material
2	Distanzhalter + Isolator/ bracket + isolator
3	Dübel lt. Statik/ anchor acc. to static
4	Tragprofil/ profile
5	Bohrschraube/ self drilling screw
6	Wärmedämmung/ insulation
7	Befestigung WD/ fixing insulation
8	Hinterlüftung/ ventilation
9	Fassadenplatte/ cladding
10	Befestigung Platte/ fixing cladding

XLA - 103

Vertikalschnitt - Sockelabschluss / vertical section - base detail



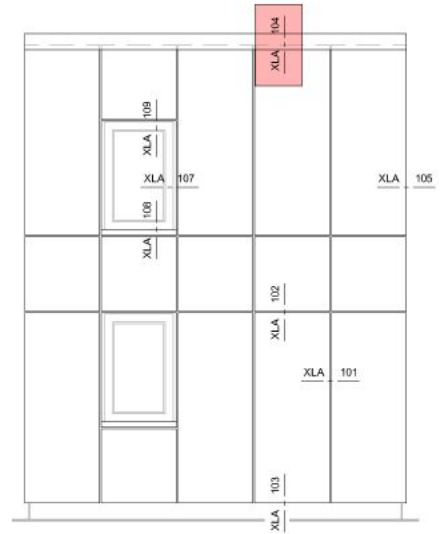
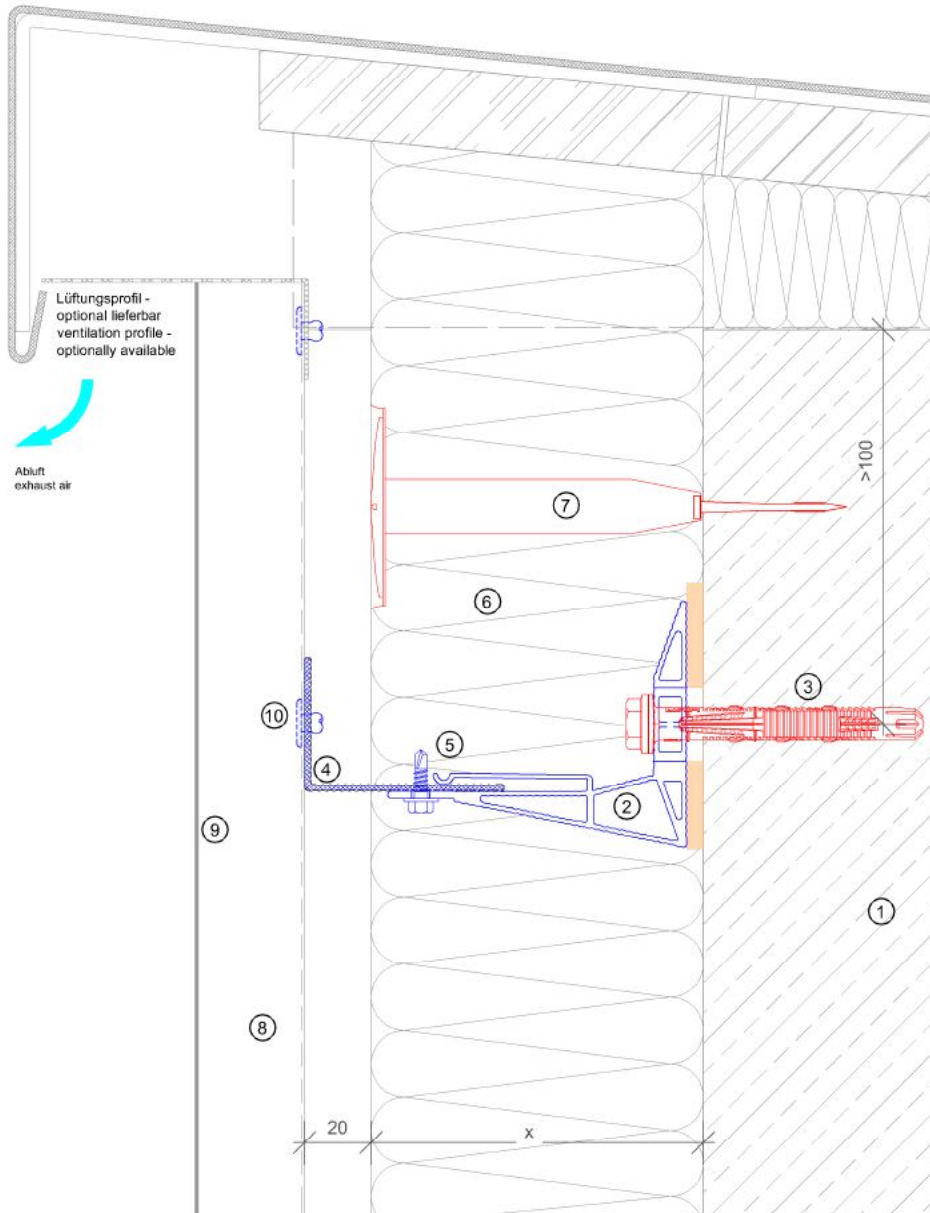
Lüftungsprofil - optional lieferbar
ventilation profile - optionally available



Legende	
1	Untergrund/ base material
2	Distanzhalter + Isolator/ bracket + isolator
3	Dübel lt. Statik/ anchor acc. to static
4	Tragprofil/ profile
5	Bohrschraube/ self drilling screw
6	Wärmedämmung/ insulation
7	Befestigung WD/ fixing insulation
8	Hinterlüftung/ ventilation
9	Fassadenplatte/ cladding
10	Befestigung Platte/ fixing cladding

XLA - 104

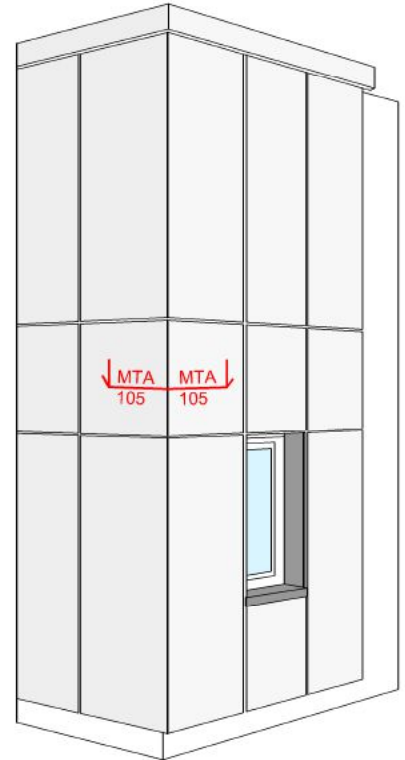
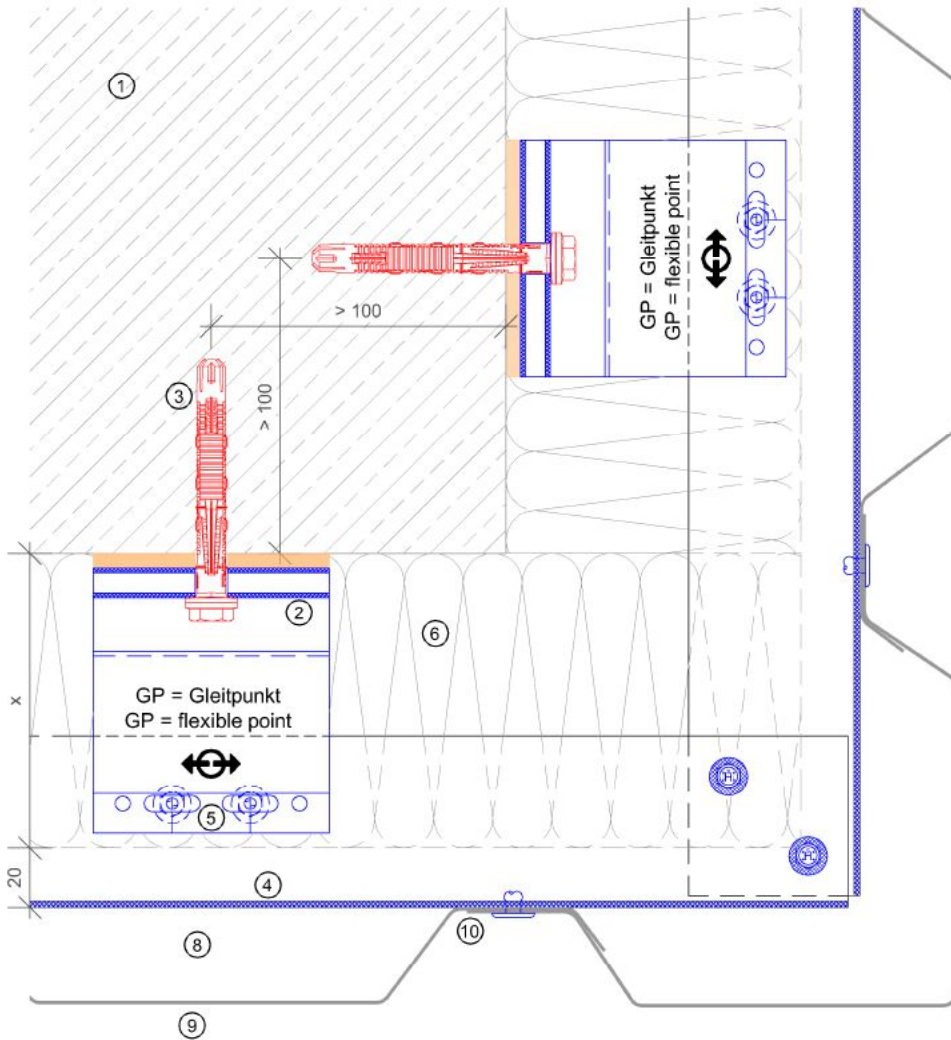
Vertikalschnitt - Dachanschluss Attika / vertical section - head detail



Legende	
1	Untergrund/ base material
2	Distanzhalter + Isolator/ bracket + isolator
3	Dübel lt. Statik/ anchor acc. to static
4	Tragprofil/ profile
5	Bohrschraube/ self drilling screw
6	Wärmedämmung/ insulation
7	Befestigung WD/ fixing insulation
8	Hinterlüftung/ ventilation
9	Fassadenplatte/ cladding
10	Befestigung Platte/ fixing cladding

XLA - 105

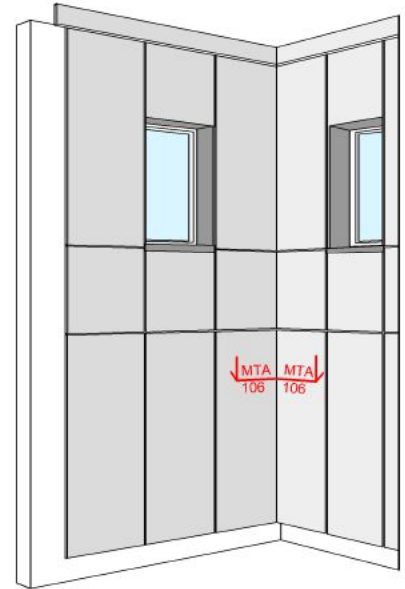
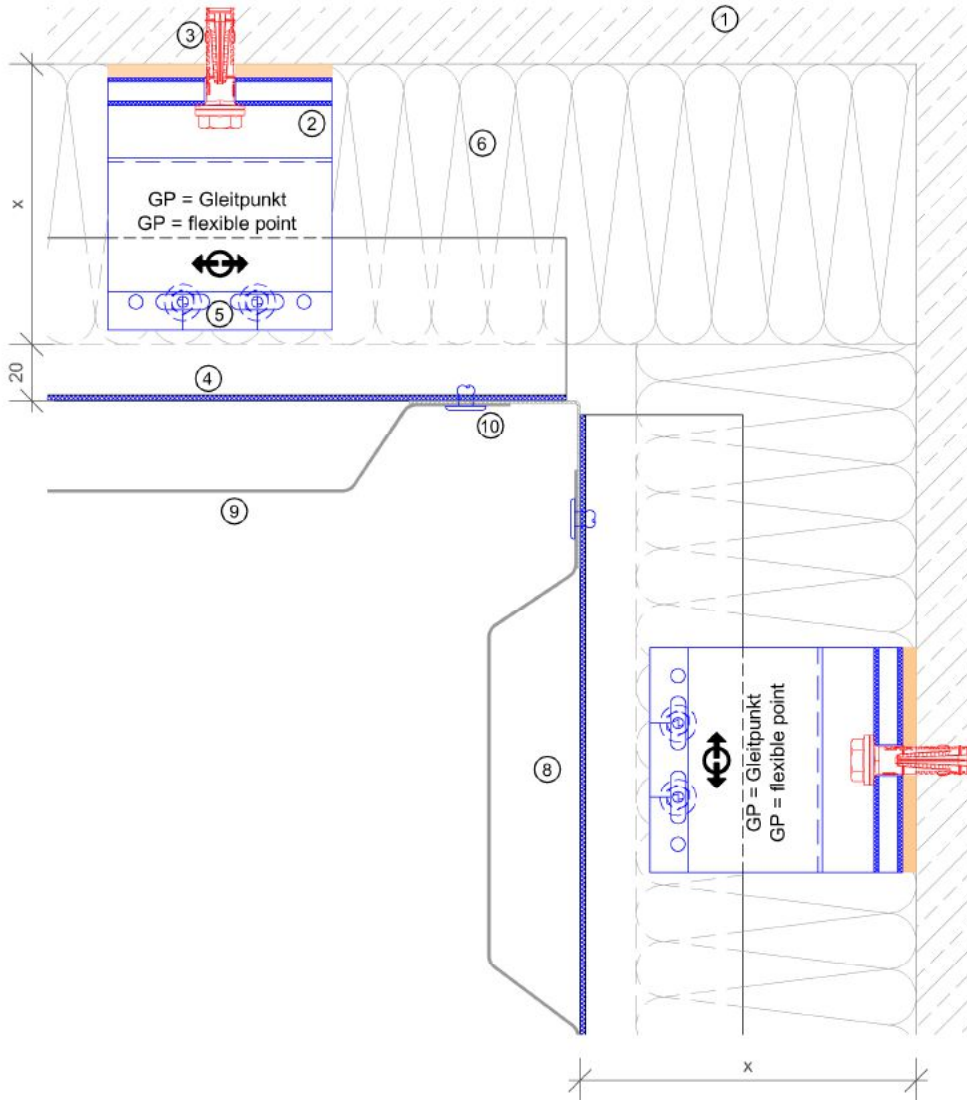
Horizontalschnitt - Aussenecke / horizontal section - external corner



Legende	
1	Untergrund/ base material
2	Distanzhalter + Isolator/ bracket + isolator
3	Dübel lt. Statik/ anchor acc. to static
4	Tragprofil/ profile
5	Bohrschraube/ self drilling screw
6	Wärmedämmung/ insulation
7	Befestigung WD/ fixing insulation
8	Hinterlüftung/ ventilation
9	Fassadenplatte/ cladding
10	Befestigung Platte/ fixing cladding

XLA - 106

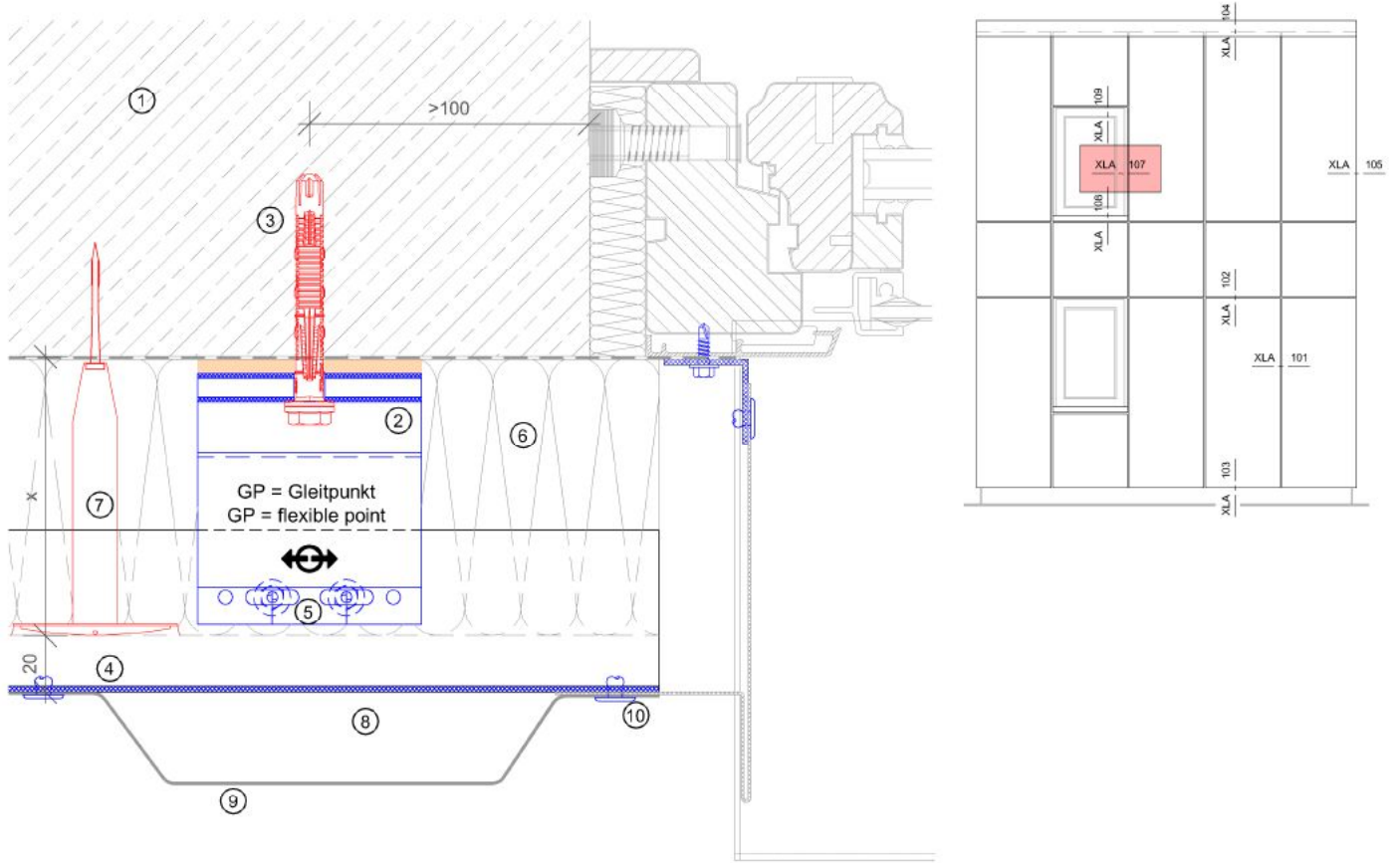
Horizontalschnitt - Innenecke / horizontal section - internal corner



Legende	
1	Untergrund/ base material
2	Distanzhalter + Isolator/ bracket + isolator
3	Dübel It. Statik/ anchor acc. to static
4	Tragprofil/ profile
5	Bohrschraube/ self drilling screw
6	Wärmedämmung/ insulation
7	Befestigung WD/ fixing insulation
8	Hinterlüftung/ ventilation
9	Fassadenplatte/ cladding
10	Befestigung Platte/ fixing cladding

XLA - 107

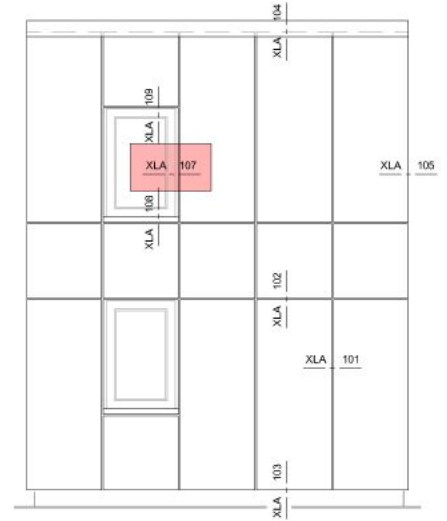
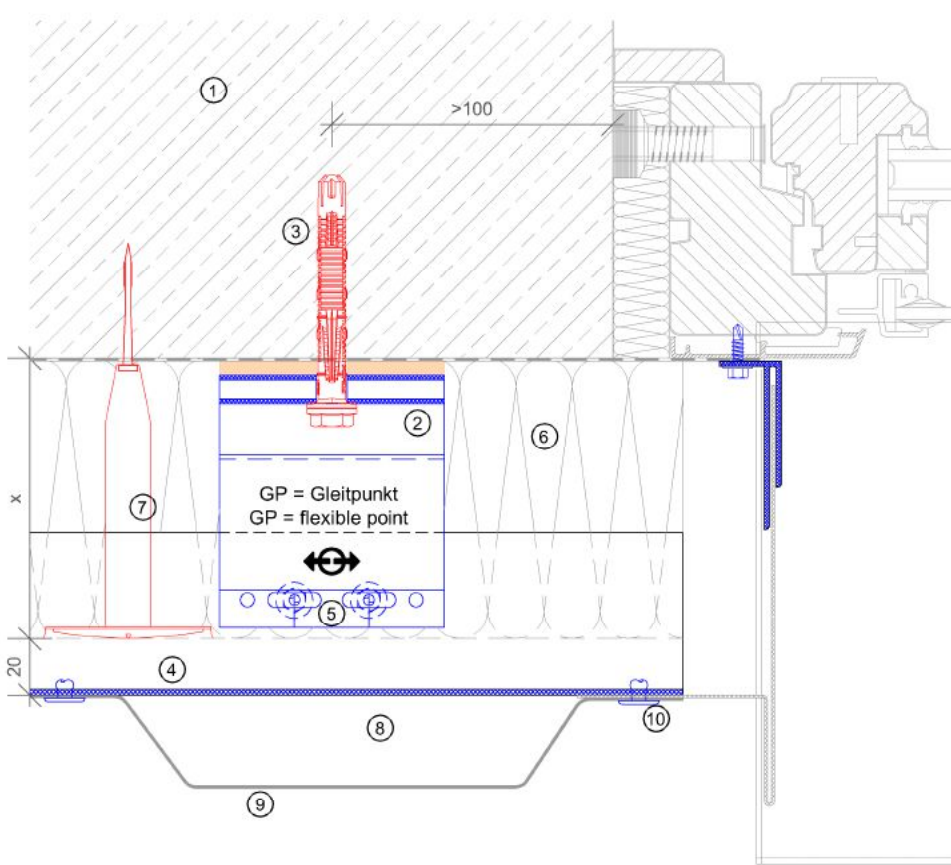
Horizontalschnitt - Fensterleibung / horizontal section - window - reveal



Legende	
1	Untergrund/ base material
2	Distanzhalter + Isolator/ bracket + isolator
3	Dübel lt. Statik/ anchor acc. to static
4	Tragprofil/ profile
5	Bohrschraube/ self drilling screw
6	Wärmedämmung/ insulation
7	Befestigung WD/ fixing insulation
8	Hinterlüftung/ ventilation
9	Fassadenplatte/ cladding
10	Befestigung Platte/ fixing cladding

XLA - 107.1

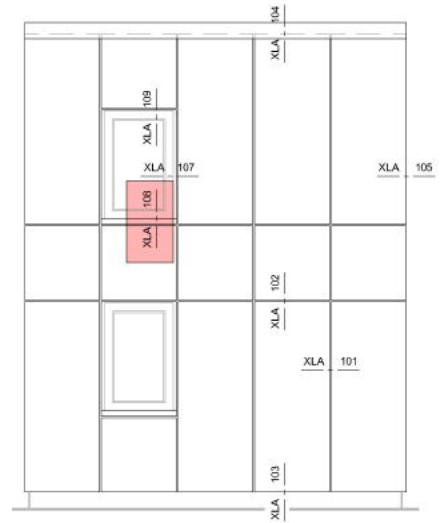
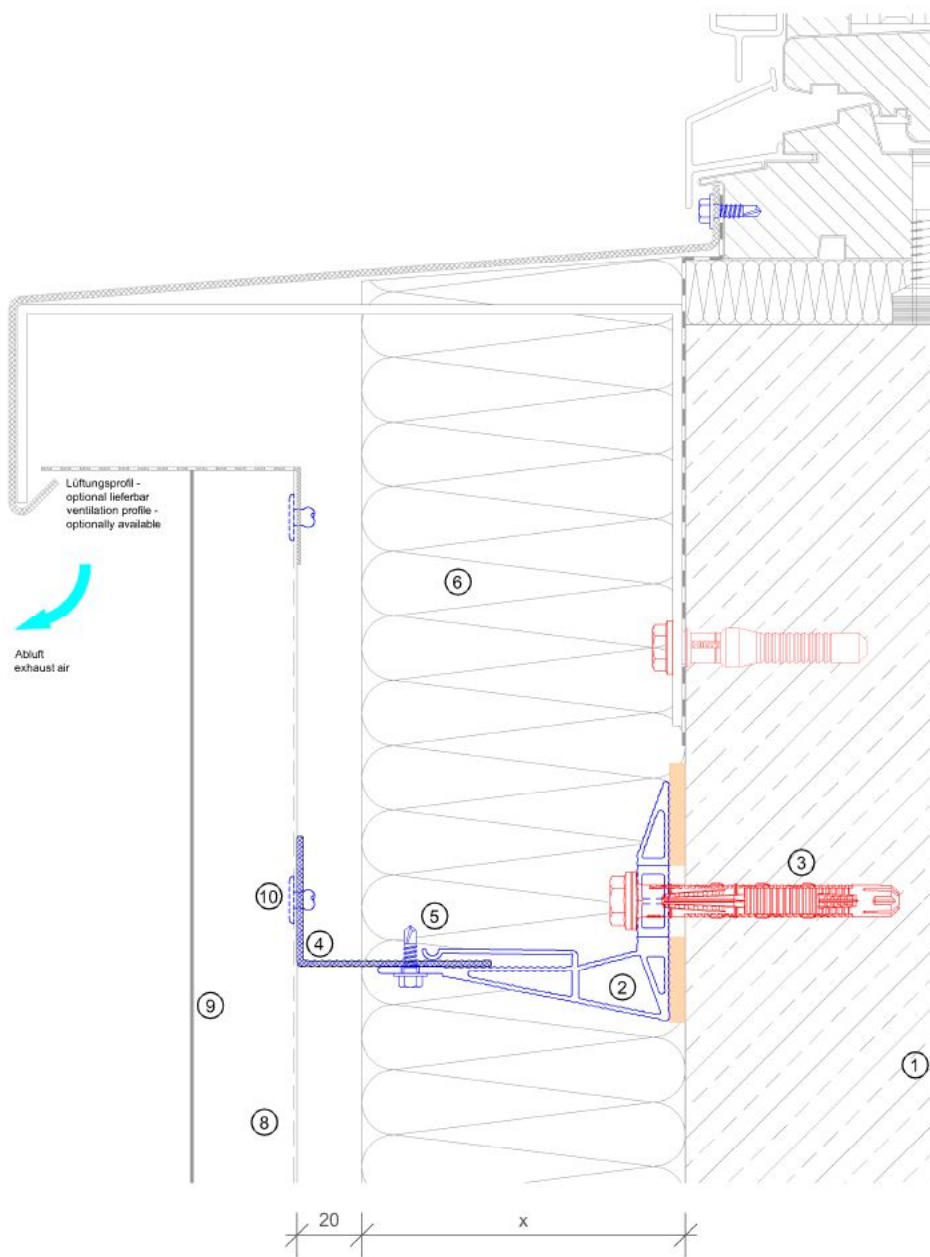
Horizontalschnitt - Fensterleibung / horizontal section - window - reveal



Legende	
1	Untergrund/ base material
2	Distanzhalter + Isolator/ bracket + isolator
3	Dübel lt. Statik/ anchor acc. to static
4	Tragprofil/ profile
5	Bohrschraube/ self drilling screw
6	Wärmedämmung/ insulation
7	Befestigung WD/ fixing insulation
8	Hinterlüftung/ ventilation
9	Fassadenplatte/ cladding
10	Befestigung Platte/ fixing cladding

XLA - 108

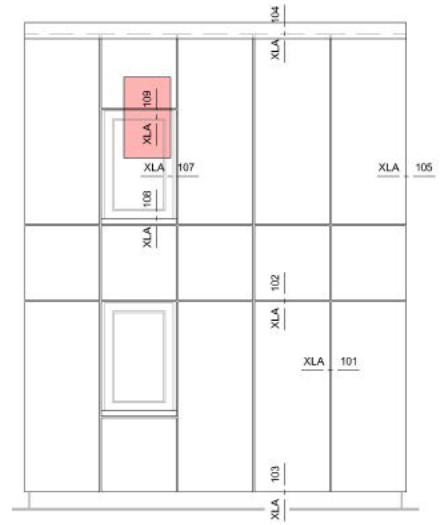
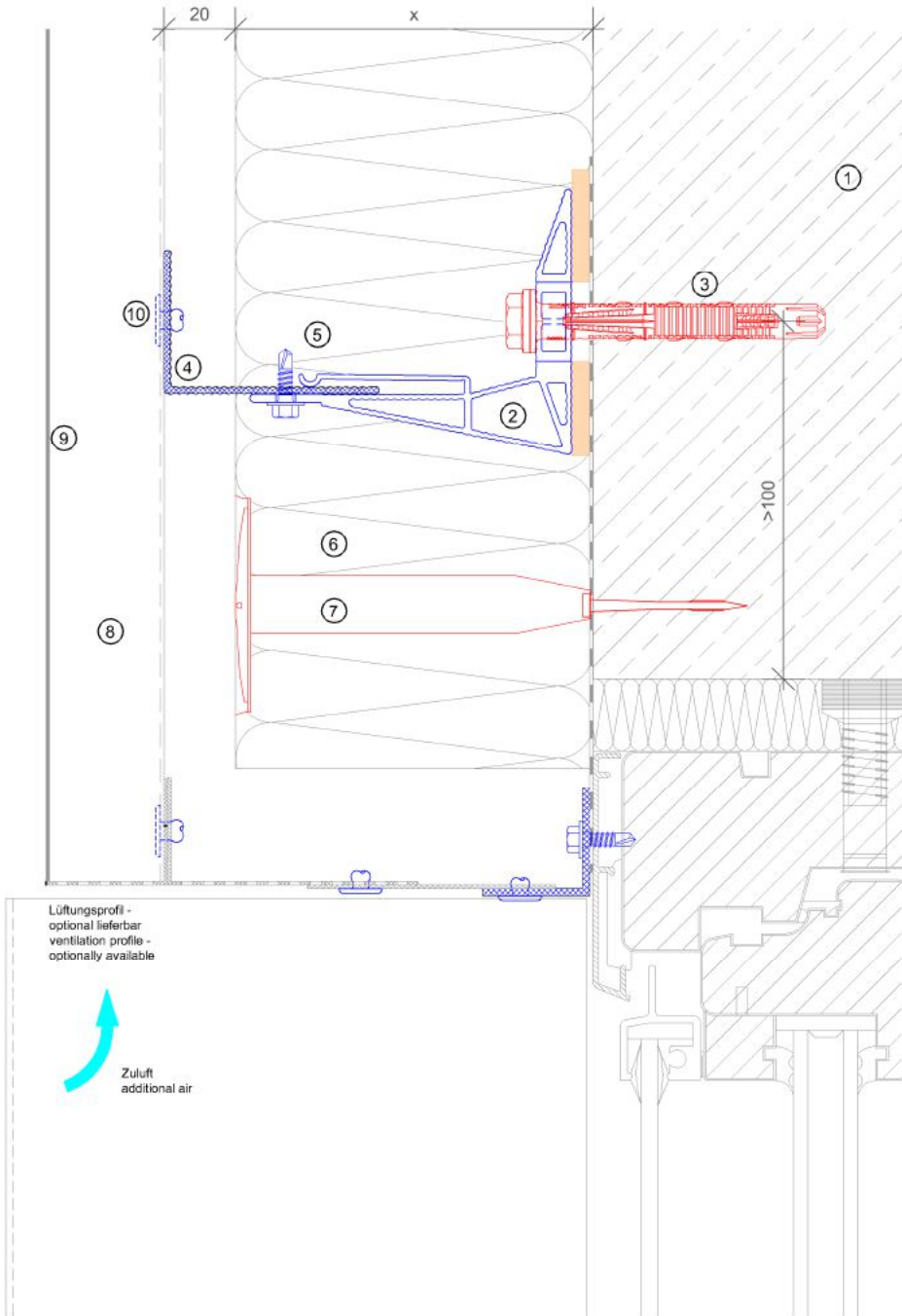
Vertikalschnitt - Fensterbank / vertical section - window - sill



Legende	
1	Untergrund/ base material
2	Distanzhalter + Isolator/ bracket + isolator
3	Dübel lt. Statik/ anchor acc. to static
4	Tragprofil/ profile
5	Bohrschraube/ self drilling screw
6	Wärmedämmung/ insulation
7	Befestigung WD/ fixing insulation
8	Hinterlüftung/ ventilation
9	Fassadenplatte/ cladding
10	Befestigung Platte/ fixing cladding

XLA - 109

Vertikalschnitt - Fenstersturz / vertical section - window - lintel



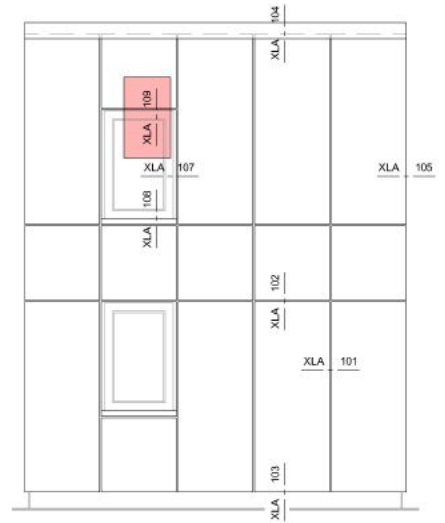
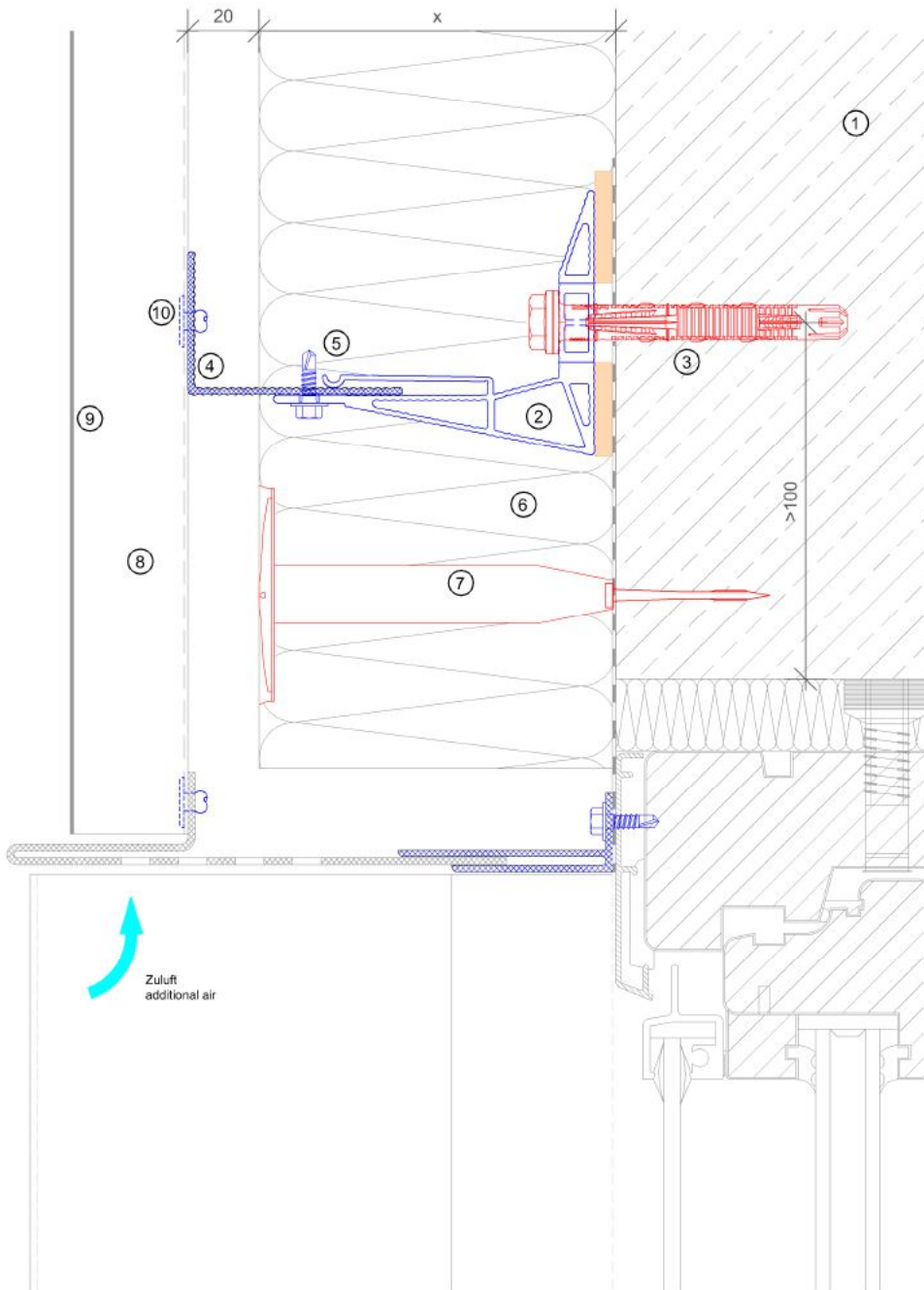
Lüftungsprofil -
optional lieferbar
ventilation profile -
optionally available



Legende	
1	Untergrund/ base material
2	Distanzhalter + Isolator/ bracket + isolator
3	Dübel lt. Statik/ anchor acc. to static
4	Tragprofil/ profile
5	Bohrschraube/ self drilling screw
6	Wärmedämmung/ insulation
7	Befestigung WD/ fixing insulation
8	Hinterlüftung/ ventilation
9	Fassadenplatte/ cladding
10	Befestigung Platte/ fixing cladding

XLA - 109.1

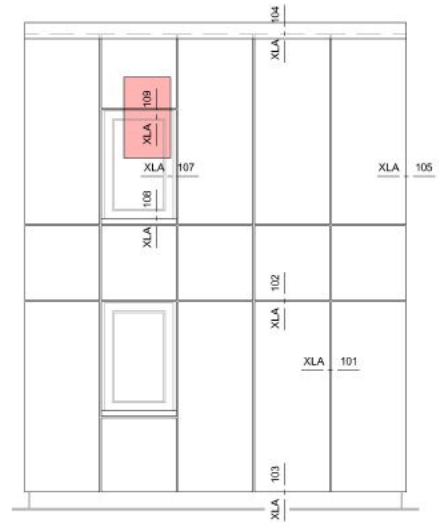
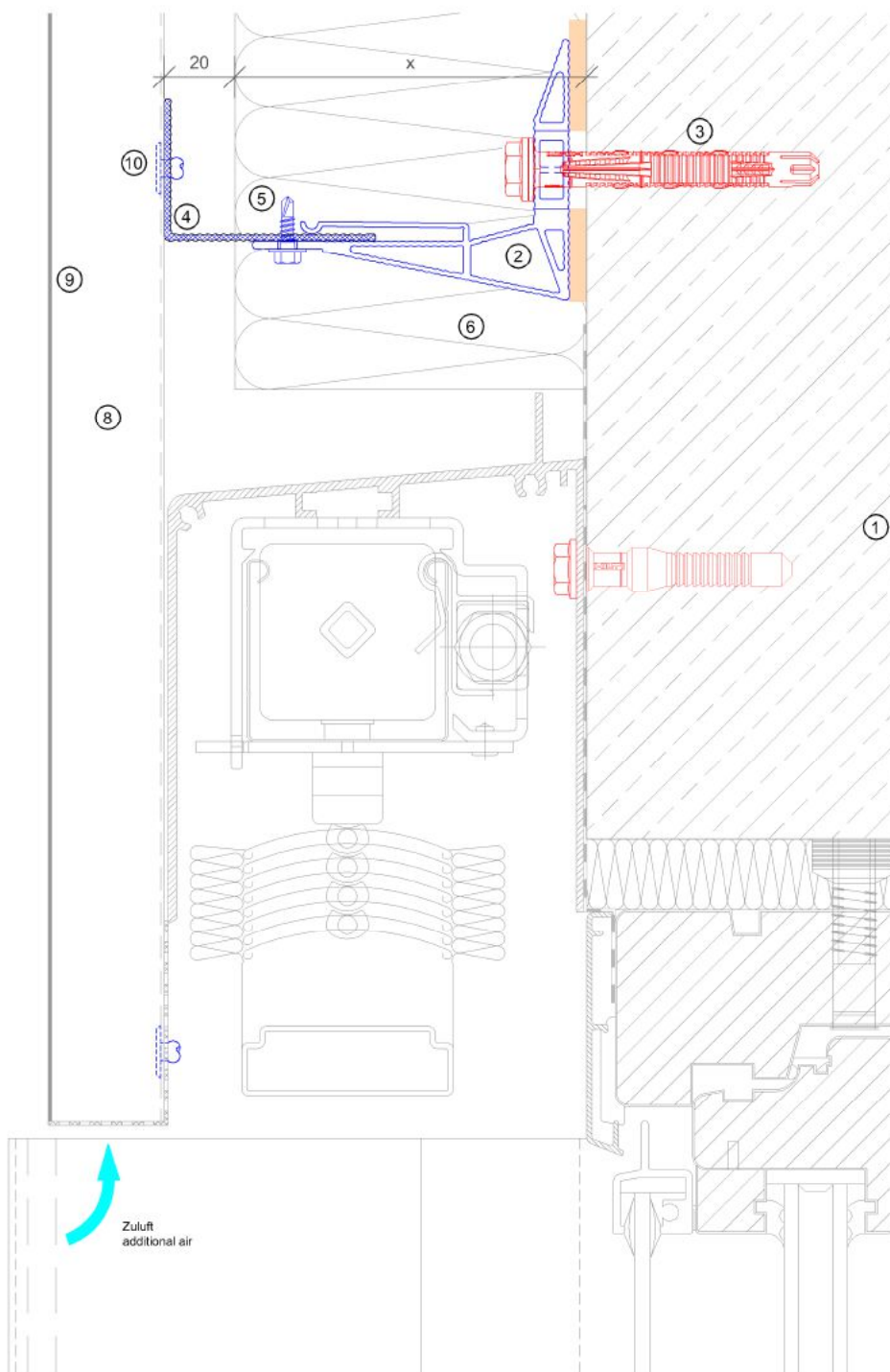
Vertikalschnitt - Fenstersturz / vertical section - window - lintel



Legende	
1	Untergrund/ base material
2	Distanzhalter + Isolator/ bracket + isolator
3	Dübel lt. Statik/ anchor acc. to static
4	Tragprofil/ profile
5	Bohrschraube/ self drilling screw
6	Wärmedämmung/ insulation
7	Befestigung WD/ fixing insulation
8	Hinterlüftung/ ventilation
9	Fassadenplatte/ cladding
10	Befestigung Platte/ fixing cladding

XLA - 109.2

Vertikalschnitt - Fenstersturz / vertical section - window - lintel



Legende	
1	Untergrund/ base material
2	Distanzhalter + Isolator/ bracket + isolator
3	Dübel lt. Statik/ anchor acc. to static
4	Tragprofil/ profile
5	Bohrschraube/ self drilling screw
6	Wärmedämmung/ insulation
7	Befestigung WD/ fixing insulation
8	Hinterlüftung/ ventilation
9	Fassadenplatte/ cladding
10	Befestigung Platte/ fixing cladding